

MADISON MONTHLY NJ

MAILED FREE
TO EVERY HOME
AND BUSINESS
IN MADISON

Published by Renna Media

Issue 12 • December 2018

*Place Your
Ad In
This Space!*

A GREAT
ATTENTION GRABBER



First come, first served.

**CALL TINA
FOR DETAILS
908-418-5586**

MADISON ROTARY COMPLETES 2018 DICTIONARY PROJECT



(above, front, l-r) Connor Mirzaian, Avery Ost, Quinn Hollenbach, Catilin Nallin, Juliana Ozol, Olivia Khan, Mathias Osorio, Christopher Leon Roman. (back, l-r) Rotarians Joe Smith, Mayor Bob Conley, Neal Oldendorp, John Hoover.

Submitted by Carmela Moeller

The Rotary Club of Madison just completed its annual Dictionary Project. A total of 232 students in twelve 3rd Grade Classes in Madison received their personalized copy of the Dictionary/Gazetteer distributed by Madison Rotarians.

Many questions were asked by the enthusiastic children, including "have you read the whole dictionary? Are there any famous Rotarian football players?" Mayor Bob Conley, also a Rotarian, was asked about the New Jersey page. Questions such as "Does New Jersey have a state song? Why Not?" It would not be surprising if someday soon a state song proposal will be forthcoming from the 3rd Graders of the Kings Road School.

Judy DeGennaro, Chair of the Dictionary Project, said "This project was an absolute delight to all who participated. It gives such great hope for the future to interact with our wonderful children and to see what a great job our teachers are doing!"

The next Rotary school project will be sometime in the Spring when the Madison Rotarians will read the Rotary children's book, "Andy and Elmer's Apple Dumpling Adventure" to the second graders.

The Rotary Club of Madison has an enthusiastic and engaged network of ordinary people doing extraordinary

things to serve humanity in our local and global communities. We have 88 members and are inviting like-minded individuals to join our successful and vibrant club. President Michel Belt encourages you to come learn about Rotary by attending any one of our three weekly meetings as our guest.

You have your choice of two weekly meetings: Thursdays, 7:45 a.m. breakfast at the YMCA, 12:15 p.m. lunch at the Madison Hotel.

To learn more, join or visit a Rotary meeting - contact Barry Kroll, at barrykroll@aol.com or 973-476-2772 or visit madisonrotarynj.org.

MADISON SANTA & VILLAGE



Madison Christmas Committee
invites you to visit
MADISON SANTA
5 days a week

by the Madison Train Station
thru December 23, 2018.

Bring a camera & a smile!

Mondays, Wednesdays & Fridays

1:00 p.m. - 5:30 p.m.,

and Saturdays & Sundays

12:30 p.m. - 5:00 p.m.

*****ECRWSEDDM*****
**POSTAL PATRON
MADISON, NJ 07940**

Colonial
APPLIANCE

**Lowest Prices of Year
FREE Local Delivery!**

Our 38th year serving the tri-state area.



**VIKING
RANGE SALE**

908-665-1212

25 Passaic Street
New Providence, NJ 07974

colonialappliance.com



Madison Monthly is published by Renna Media. 6,300 newspapers are printed monthly and mailed to every business and resident in Madison.

Although great care has been taken to ensure the information contained within is accurate, Renna Media assumes no liability for errors or omissions.

©2018 Contents of this newspaper cannot be reproduced without written consent from Renna Media LLC.

To submit news email:
editor@rennamedia.com

Madison Monthly
is online at
www.rennamedia.com
like us on [facebook.com/](https://www.facebook.com/MadisonMonthly)
Madison Monthly

Advertise in this newspaper

**6,300 papers
are printed
monthly
and mailed
to every home
and business
in Madison.**



Reserve space in the next issue.
Call Tina today at 908-418-5586
or email info@rennamedia.com

MADISON LIBRARY

39 Keep Street, Madison, NJ. • Tel: (973) 377-0722 • www.madisonpubliclibrary.org

Touch the Music: The Nutcracker

(ages 2-5) *Drop-in

Tuesday, Dec. 4, 10:30 a.m.

Hear the story of The Nutcracker accompanied by the beautiful music of the Nutcracker Ballet by Tchaikovsky. Then play some of the instruments you hear in the music! This interactive, engaging, and hands-on music program is brought to us by Touch the Music. Drop-in program - No registration required. Sponsored by Ralph Errington Charitable Foundation.

Intervention for Memory Loss

Tuesday, Dec. 4, 7:30

Presented by Dr. DeGaetano, a licensed clinical psychologist specializing in adult clinical neuropsychology and rehabilitation psychology. Join us for a discussion on memory loss and Alzheimer's disease. Dr. Gaetano will be discussing what memory loss is, types of memory loss and how it affects the patient and their family members. She will also discuss what resources are available for the patient suffering from memory loss and their family and what we have available to help them (strategies, medications, health options and clinical trials).

Adult Craft Club

Thursday, Dec. 6, 1:30-2:30 p.m.

Join us for the new Madison Public Library Craft Club. We will meet the first Thursday of every month in the Rushmore Room at 1:30. We will explore a different craft each month - book folding, string art, decoupage, painting and much more! There is no registration needed and no fee.

Traveling Lantern: The Story of Ebenezer Scrooge

(Families) Drop-in

Saturday, Dec. 8, 3:00 p.m.

Ebenezer Scrooge is a nasty, mean, snarling old geezer with no care for anything other than his money. His one and only friend visits him as a ghost, and starts him on a journey that melts his icy heart and teaches him the joys of caring for, and giving to others.

Intro to Photography Class

Tuesday, Dec. 11, 7:00 p.m.

Come learn about the many functions of your DSLR and mirrorless camera. Presented by Madison PhotoPlus.

Legends and Lore of the Winter Holidays

Wednesday, Dec. 12, 7:30 p.m.

December, with its long nights and festive celebrations, is a time for reflection and reminiscence. Join David Emerson of History on the Hoof as he conjures the ghosts of Christmases past to present the Legends and Lore of the Winter holidays. Hear the traditional stories, learn of the origins of archaic customs, and discover how the Victorians in general - and three authors in particular - revitalized and reinvented our favorite holiday. A veritable cornucopia of holiday treats certain to delight the family.

Advanced Beginner/Intermediate Chess Class

(Ages 6+) Reg. Required

Saturday, Dec. 15, 10:00 a.m.

Join us for a Saturday morning chess class led by Coach Rob of Diplomat Chess! Students will improve their chess abilities, as well as develop strategic thinking skills, foster good sportsmanship, improve concentration, build self-confidence, and have fun! Class time will be split between an interactive group lesson and playing time. All equipment will be provided by Diplomat Chess. This class is for advanced beginners (players that can complete a game of chess to checkmate). Registration required. Sponsored by Friends of the Madison Public Library.

Essential Oils Intro Class

Wednesday, Dec. 19, 7:00 p.m.

Come Learn about essential oils and their uses. Learn how to choose the right oils, different grades of essential oils, distillation processes, and how to include them in everyday life.

Anime & Ramen

(Grade 8+)

Friday, Dec. 21, 4-5 p.m.

Your favorite anime + noodles = the perfect after school hangout! Meet in the Chase Room!

MORRIS SIGN CO.

Family Owned And Operated. Over 30 Years Experience.



WE CAN HELP
YOU WITH TRUCK
LETTERING TOO!

MORRIS SIGN CO.

**15% OFF
TRUCK
LETTERING**

PLEASE PRESENT COUPON
AT TIME OF ESTIMATE

New Clients Only. Expires 12/31/18

Visit our website @ morrissign.com • Follow us on [Facebook](https://www.facebook.com/morrissign) Morris Sign Company

A FULL SERVICE SIGN SHOP FROM FABRICATION TO INSTALLATION

SPECIALIZING IN:

- Graduation Signs & Banners
- Truck Lettering
- Vehicle Wraps
- Commercial Signs
- Advertising Signs
- Monuments
- Job Site Signs
- Golf Outing Signs
- Magnets
- Banners
- Parking Signage
- Directional Signage
- Digital Prints
- Store Front Signs
- Traffic Signs
- Box Signs
- Installations

30 Troy Road Whippany, NJ 07981 • 973-386-1755

NJ Advanced Acupuncture

ACHIEVING HEALTH NATURALLY

ACUPUNCTURE, HERBAL MEDICINE,
NUTRITIONAL COUNSELING

- Infertility
- Migraines
- Frozen Shoulder
- Carpal Tunnel
- Elbow Tendonitis
- Depression / Anxiety



Morgan Reade, L.Ac. M.S.

CALL TODAY FOR
AN APPOINTMENT

201.400.2261

**MOST
INSURANCES
ACCEPTED**

2 LOCATIONS

555 Passaic Ave.
West CALDWELL, NJ

6 Green Village Rd.
MADISON, NJ



-NJ-
Advanced Acupuncture

NJAdvancedAcupuncture.com

METC VISITORS CENTER RIBBON CUTTING

HELP WANTED



The Connection

The Connection, a community-based nonprofit organization in Summit is currently recruiting for:

Lifeguards

We have a variety of positions available including days (early morning, midday, afternoon), evenings and weekends. Compensation

- Starting at \$10.00 per hour
- \$5.00 per hour premium offered for shifts worked between 5:00am – 8:30am.

Swim Instructor

You will be responsible for teaching safe pool and water practices while instructing swimming skills and techniques.

- Monday – Friday 3:30pm – 6:30pm
- Saturday – 9:00am – 1:00pm
- Sunday – 9:00am – 12:00pm and 1:15pm – 3:30pm

Weekend Aquatics Supervisor

Responsible for supervising staff and overseeing all scheduled programs/activities. Shifts available are:

- Friday – 8:30am – 6:00pm
- Saturday and Sunday – 8:00am – 5:30pm

Afterschool Program Assistants

Supervise groups of Elementary-aged youth and plan engaging activities in an afterschool setting.

- Monday – Friday, 2:45pm - 6:00pm while school is in session, following the Summit Public Schools calendars

Maintenance

Responsible for the maintenance and cleanliness of our facility

- Hours include evenings and weekends.

To apply:

Stop in to The Connection and complete an application or Submit a resume to Nancy MacNiven at: nancy.macniven@theconnectiononline.org

The Connection offers membership discounts to staff and their families (work hour minimums apply) including access to fitness facility and pool as well as adult and children's classes.

*The Connection is an Equal Opportunity Employer.
We believe our differences make us better.*

Mayor Robert Conley cut the ribbon at the Museum of Early Trades & Crafts, 9 Main Street, on Monday, November 12, 2018.

The Museum of Early Trades & Crafts is now the official Madison Visitors Center. With a newly renovated front entrance that reveals more of the historic building, including a hidden

niche and stenciled walls, the new Visitor Center is ready to welcome guests, visitors and anyone looking for information about Madison.

The Visitors Center is open Tuesday-Saturday 10-4 and Sundays noon-5.

For more information please visit METC.org.



(above, l-r) Councilman John Hoover, METC Board of Trustees Chair Thomas Judd, Mayor Robert Conley, Chamber Vice President Robbin Salmeri, Peter Hiscano, METC Director of Operations Tara Heffernan, Chamber President John Morris, METC Executive Director Deborah Starker & METC Curator of Collections Karen Spicer.

For sale luxury, decorated model, starting at \$699,000.



ALPINE RIDGE BOUTIQUE HOMES – 55+ ADULT LIVING

*An Intimate Collection of 30 Distinctive Townhomes for Active Adults 55+... Close to Everything...Closer to Perfection!
Specifically designed, to appeal to discerning homebuyers like you.*

Sales office is opened everyday 12 to 4 as well as by appointment,
but CLOSED WEDNESDAY AND THURSDAY

Speak to one of our representatives today!

Call 732-710-3839

or Email for additional information

Email: management@rent1nj.com

1490-1496 Route 22 West, Mountainside, NJ

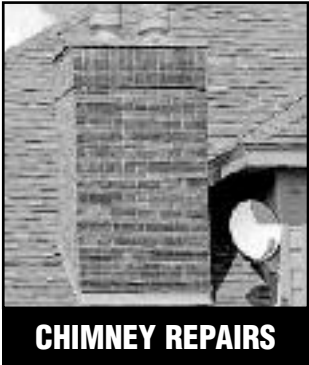
- ★ DOWNTOWN WESTFIELD - just 2 miles to fabulous shopping, dining and entertainment.
- ★ NJ Transit Bus Service to NYC, One light west at Lawrence Ave and route 22 east.
- ★ Convenient to Echo Lake Country Club golf course.
- ★ Beautifully appointed townhomes with first floor master suites in many designs.
- ★ Low maintenance living - all exterior maintenance, landscaping and snow removal, handled by the homeowners association.
- ★ DOWN SIZING? Live near all your favorite places you love - sell your big home and live carefree at Alpine Ridge.
- ★ Beautiful parks and nature centers nearby parks.



FOUNDATION REPAIRS BEFORE & AFTER



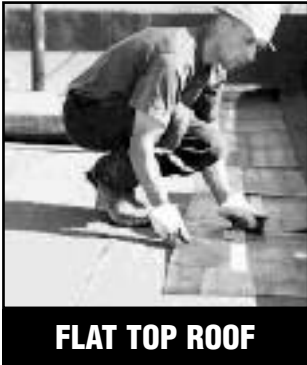
CHIMNEY LINERS



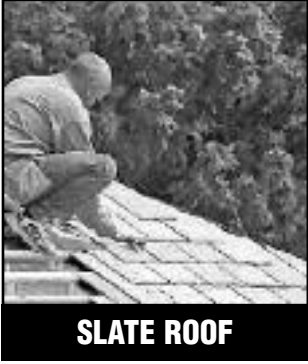
CHIMNEY REPAIRS



SHINGLE ROOF



FLAT TOP ROOF



SLATE ROOF



SPANISH STYLE ROOF



NEW STEPS

GUTTER CLEANING STARTING AT \$65

MAGIC IMPROVEMENTS (800) 206-8529
With this coupon. May not be combined with any other offer.
Expires 1-13-19. Go to LocalFlavor.com for more coupons.

15% OFF SENIOR CITIZEN DISCOUNT

MAGIC IMPROVEMENTS (800) 206-8529
With this coupon. May not be combined with any other offer.
Expires 1-13-19. Go to LocalFlavor.com for more coupons.

\$250-\$350 ANY CHIMNEY JOB

MAGIC IMPROVEMENTS (800) 206-8529
With this coupon. May not be combined with any other offer.
Expires 1-13-19. Go to LocalFlavor.com for more coupons.

\$300 OFF ANY JOB of \$2,000 or more

MAGIC IMPROVEMENTS (800) 206-8529
With this coupon. May not be combined with any other offer.
Expires 1-13-19. Go to LocalFlavor.com for more coupons.

\$800 OFF ANY NEW ROOF JOB

MAGIC IMPROVEMENTS (800) 206-8529
With this coupon. May not be combined with any other offer.
Expires 1-13-19. Go to LocalFlavor.com for more coupons.

\$350-\$450 ANY ROOF REPAIR

MAGIC IMPROVEMENTS (800) 206-8529
With this coupon. May not be combined with any other offer.
Expires 1-13-19. Go to LocalFlavor.com for more coupons.



**24/7
EMERGENCY
SERVICE**

**CALL FOR FREE ESTIMATE
800-206-8529**


LEG PAIN

You Don't Have To Live With It!


That "searing, burning pain" in your thigh and calf... that "aching, numbing" feeling in your hip and buttocks... that "tingling" in your foot and toes and loss of balance... It interferes with your ability to walk, to ride a bicycle, play golf, garden... to have **FUN IN LIFE!**

Leg pain, thigh ache and numbness, and tingling in the foot may actually be caused by a pinched back nerve even though you have **NO** back pain - it could even be Sciatica. Dr. Murphy is an expert at finding the **CAUSE** of your leg pain and numbness and **CORRECTING IT WITHOUT THE USE OF DRUGS OR SURGERY.**

"YOUR BETTER HEALTH IS OUR ONLY CONCERN!"



Dr. Joseph J. Murphy
Chiropractic Physician
PAST PRESIDENT
The NJ Board of
Chiropractic Examiners
The NJ and Morris
Chiropractic Societies
Palmer Graduate



Suburban Chiropractic Center

301 Main Street • Chatham
973-635-0036 • www.drmurphy.com

Celebrating Our 34th Year!

(FORMERLY TMC'S BOUTIQUE)



LINDA'S Creative Gifts
Unique Handmade Gifts and Jewelry

Handmade

- Jewelry
- Cork Handbags
- Jams
- Soy Candles
- Goat Milk Lotions & Soaps

Gifts for Ladies, Kids, Men & Home

40 Local and 25 U.S. Artists Sell Here!

20% OFF ONE ITEM
(not including sale items)
Expires January 31, 2018

(908) 473-0982

1259 Springfield Avenue, New Providence, NJ



ITALIAN RESTAURANT • PIZZA

A Madison favorite since 1991

- All Day Delivery • Daily Specials
- Corporate Accounts Welcome

Mon-Sat: 11 am to 10 pm • Sun: 12 noon to 9 pm

973.765.0565
nickysfirehouse.com

15 Central Avenue, Madison, NJ

\$2.00 OFF ANY LARGE PIZZA
Expiration 12.31.18.

ART LEAGUE OF THE CHATHAMS WINTER EXHIBIT CELEBRATES 30 YEAR ANNIVERSARY

Art League of the Chathams - 30th Anniversary Celebration. Winter, Friends & Family Show, Reception, Boutique and Betsy Mirabelli's Solo Exhibit.

The Winter Exhibit will be held, Sunday, December 9, 2018 from 2 to 4 p.m., at the Chatham Twp. Municipal Building, 58 Meyersville Rd., Chatham, NJ. It runs from December 9, 2018 through mid-March 2019.

In addition to the member artists' exhibit in the strolling gallery, it will also showcase their annual boutique of artistic wares and wall display of 6 x 6 pieces - all for sale.

Chatham artist, Betsy Mirabelli will exhibit her landscapes in the Lundt-Glover Gallery. Her

solo exhibit, entitled "Landscape Memories" includes some 40 paintings, primarily landscapes. Merynda Adams will play the harp for Betsy's solo show.

States Betsy, "I have been painting for a number of years and have always enjoyed it when a painting just flows." Betsy, a Connecticut College graduate, studied art at the New School, Parsons. When she moved to NJ, she studied at the Visual Art Center.

The event is free and open to the public. Art and boutique items are for sale and refreshments will be served.

For more information, telephone the Municipal Building at 973-635-4600.



(above) Betsy Mirabelli



(above) Aspen Trees by artist Betsy Mirabelli

2018 JADE CRYSTAL HOLIDAY ORNAMENT

The Madison Area Chamber of Commerce has designed and created its annual limited edition ornament in order to celebrate Madison at the holidays. The ornament is available for \$20 and can be purchased at The Madison Pharmacy, 66 Main St., Stewart-Morris Awards, Gifts & Flags, 71 Kings Rd. and The Museum of Early Trades & Crafts, 9 Main St. You may also contact The Madison Area Chamber of Commerce by email at MadisonChamber@gmail.com or by calling 973-377-7830.

The jade crystal beveled ornament is oval and etched with an image of Madison's historic train station which was built in 1916. Each ornament is inscribed with the year 2018 and includes a silver hanging cord that makes the ornament suitable for tree or window display. Also included is a two-piece gift box, which permits purchasers of the ornament to safely ship it to friends and family who won't be in town this holiday season.

"Our 2018 holiday ornament is the ideal gift from or to anyone who loves Madison," said Karen Giambra, executive director of the Chamber. "It's a great gift item for the holidays

or for any other special occasion."

Proceeds from the ornament sale will help to fund the Chamber's programs and activities, which are focused on business development in Madison and the promotion of the Chamber's member businesses and organizations. The Chamber is an incorporated 501(c)(6) business league.

For more information about the ornament, bulk purchases or the programs and events of the Chamber, please contact Karen Giambra at 973-377-7830 or at MadisonChamber@gmail.com.





Interior Remodeling



Masonry



Decks & Porches



Roofing & Siding

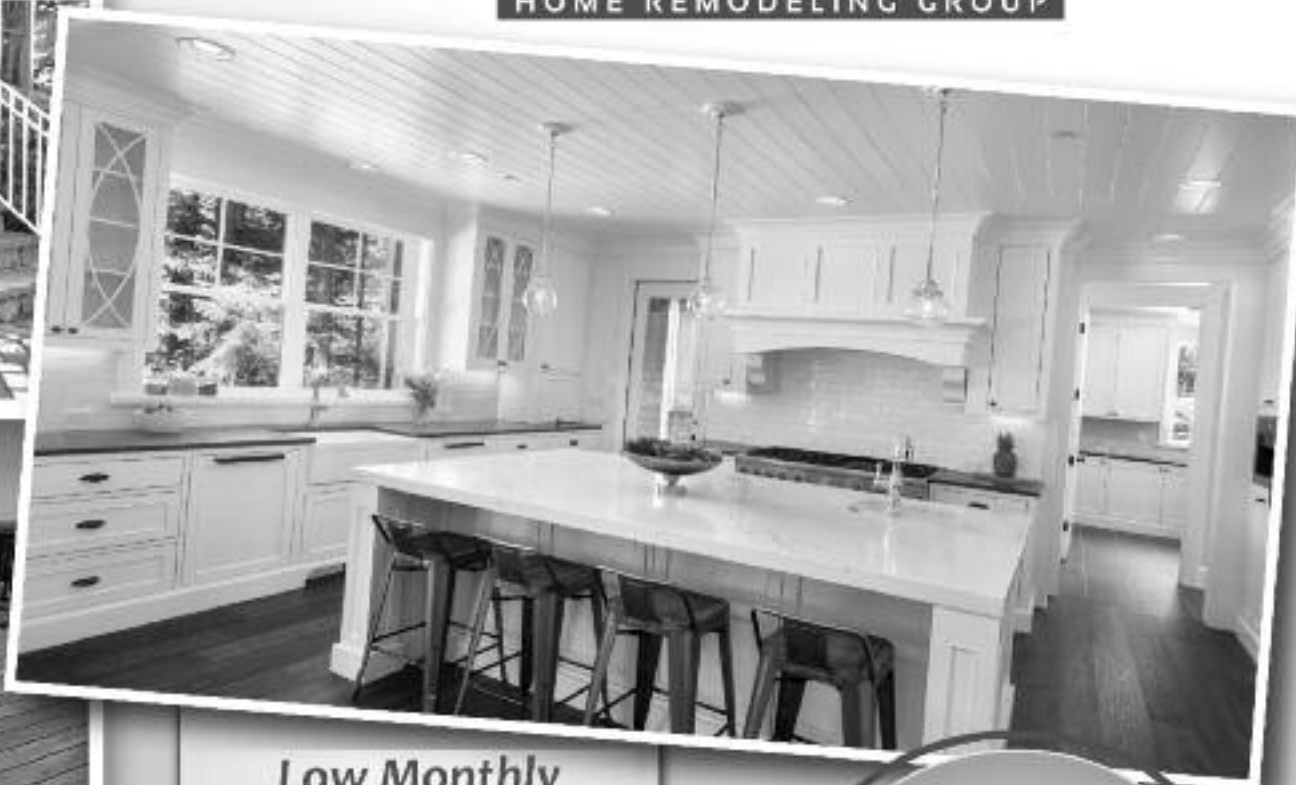


Windows & Doors



Exterior Remodeling

Family Owned & Operated



Low Monthly Payment Plans

Basements \$295
Decks/Patios \$139
Porches/Steps \$105
Bathrooms \$199
Windows \$189
Kitchens \$289
Roofing \$179
Siding \$259

0% for up to 18 Months

Estimated monthly payments.
Rates & payments based on credit approval.

15% WINTER SAVINGS

With this ad. Up to \$1,500 on any job.
Not valid with other offers or on
prior purchases. Not to be
combined with any other offer.
Expires 1-15-19

**Call Today
for a Free Estimate!
855-624-6655**

Affordable, Professional & Reliable

- ✓ Interior & Exterior Remodeling
- ✓ 25+ Years Remodeling Experience
- ✓ 100% Financing Available
- ✓ BBB A+ Rated
- ✓ HomeAdvisor Screened & Approved
- ✓ GAF Certified Roofing Installer
- ✓ 0% Interest Programs
- ✓ Outstanding Workmanship
- ✓ CertainTeed Building Solutions Specialist



Licensed & Insured • LO65735 • NJ DCA: 13VH07755300



MagnoliaHomeRemodeling.com

MADISON SENIORS LEARN ABOUT NUTRITION AND FITNESS

Submitted by Diane Driscoll

Zufall Health Center, the SNAP-Ed education provider for Morris County, recently partnered with the Madison Housing Authority to offer classes to their senior residents. NJ SNAP-Ed, a part of the Supplemental Nutrition Assistance Program (SNAP), is a nutrition and fitness education program aimed at teaching NJ residents how to make healthy, budget-friendly food choices and lead more active lives. SNAP-Ed classes aim to reduce hunger and prevent obesity, providing participants with practical information on nutrition, cooking, food safety and physical activity.

Carla Adorno, Zufall's SNAP-Ed Community Health Worker, provided a 4-week nutrition, cooking, and exercise class "Eat Smart, Live Strong" to seniors living in the Madison Housing Authority's Rexford S. Tucker senior apartments. Each class taught new exercises and provided a healthy recipe that the participants were able to help make and then enjoy together. Each week also focused on a different educational lesson, such as how to read nutrition labels, how to compare unit prices of items at the grocery store, how to set nutritional goals of increasing fruit and vegetable intakes, how to stick to the recommended daily food allowances for a senior's diet, and how to increase daily physical activity goals to at least 30 minutes a day.

Jessica Kirchenbauer, NORWESCAP Social Service Coordinator for the Madison Housing Authority, stated "Zufall's SNAP-Ed classes taught our senior residents good nutrition, how to make their food dollars stretch further and how

to make physical activity a part their everyday lives. With Carla's passion and energy about the SNAP-Ed Program, our seniors were very engaged throughout the four week series, and really enjoyed the healthy recipes. We hope to offer additional classes in the future so more residents can benefit."

SNAP-Ed is a federally funded grant program by the United States Department of Agriculture/Food and Nutrition Service (USDA/FNS) through the New Jersey Department of Human Services (DHS) in partnership with the New Jersey Department of Health (DOH). SNAP-Ed is an extension of the federal Supplemental Nutrition Assistance Program (SNAP), formerly known as Food Stamps.

'Long Standing Collaboration'

Zufall Health Center and Madison Housing Authority collaborate on programs for seniors, including a mobile dental health van and a senior health education series, "Live Your Better Life". Their partnership has created a stable source of oral health care for public housing residents and those living in Section 8 housing throughout the city.

Zufall has been a key partner in providing high-quality, affordable and culturally competent healthcare to the residents of the Madison Housing Authority. Zufall has consistently offered access to high quality and affordable medical, dental, and supportive services designed to eliminate health disparities in our community. This collaboration has both increased accessibility of primary care health services as well as awareness of local resources among populations of special need and those most vulnerable and isolated, including public housing residents and seniors.

A recent publication on collaborations between

PHPCs Health Centers and Public Housing Agencies in which the Madison Housing Authority participated was recently approved by the Health Resources and Services Administration (HRSA). The publication, "Housing and Health: Building Partnerships to Support Public Housing Residents" was developed by the National Center for Health in Public Housing and the National Nurse-Led Care Consortium (NNCC).

As stated in the publication, "The National Center for Health and Public Housing (NCHPH) and the National Nurse-Led Care Consortium (NNCC) are pleased to support this case study publication highlighting successful Health Center Programs and public housing partnerships to improve the health of public housing residents. The publication illustrates the power of cross-sector collaboration as a vehicle for promoting the health and well-being of residents of public housing."

The relationship between Zufall Health Center and Madison Housing Authority (MHA) began in 2012 when MHA received a 3-year Resident Opportunities and Self-Sufficiency (ROSS) Program grant from HUD. Since MHA has completed the conversion of the public housing to Rental Assistance Demonstration (RAD), they are no longer eligible to apply for ROSS funding. However, the collaboration between the organizations has already been established, and there is ongoing communication, therefore joint programs will continue to develop. Zufall Health Center continues to offer dental services on their mobile van and education on the Affordable Care Act and health insurance opportunities to public housing residents. Future health education workshops, including parenting and money management skills are also being explored for residents. The study may be found at nchph.org.

ASD Life Coaches, LLC
Life Coaching for Adults on the Autism Spectrum
www.asdlifecoaches.com
Certified Cognitive Coaches
asdlifecoaches@gmail.com
732-675-6876

CERTIFIED COGNITIVE COACH

Social Skills
Independent Living
Non-verbal communication

Communication Skills
College/Career Development

BRASS SHOP
For Over 40 Years

Large Selection of Antique Lighting
Brass & Silver Polishing

• Lamp Repairs • Brass Polishing • Refinishing • Rewiring
• Antique Lamp Restoration • Replacement Glass • Lampshades

611 Central Ave., Westfield • 908-232-2161

CAR STOP
The fastest way to sell your Car, Truck, or SUV!
WE BUY CARS! INSTANT CASH TODAY!

CAR CONCIERGE SERVICE - WE COME TO YOU TO APPRAISE YOUR VEHICLE AND MAKE YOU AN INSTANT OFFER.

Call, text or email to make an appointment
908-385-2384
License Car Dealer Since 1984
email: tony@castopinc.com



(above, l-r) Marilyn McIntyre, Blanche Carney, Ardelle Walter, NORWESCAP Social Service Coordinator for the Madison Housing Authority Jessica Kirchenbauer, Sandra Clark, Zufall Health Center SNAP-Ed Community Health Worker Carla Adorno, Carmela Tribune, and Eleanor Gilhooley.

SAGE ELDERCARE'S RESOURCE GUIDE AVAILABLE

Submitted by Cindy Potters

Whether you are a caregiver of an aging parent, an older adult who needs help with meals and other services, or an organization that would benefit from local resources for seniors, the SAGE Eldercare Senior Resource Guide is a valuable tool.

The 2018-19 SAGE Eldercare Senior Resource Guide is being circulated to local senior centers, libraries, churches and synagogues, medical facilities, and other outlets that serve older adults and their families. It is a free reference guide that describes available services and offers advice for older adults wishing to remain independent in their own homes. The guide is distributed in Union, Essex, Morris, and Somerset Counties.

"We are excited to release the latest version of this unique community resource as part of the SAGE Eldercare commitment to provide an array of services promoting independence," said Angela Sullivan, SAGE Executive Director. "We thank the local organizations and businesses who have advertised in the guide."

Individuals interested in receiving a free copy of the Resource Guide may stop by SAGE

Eldercare, 290 Broad Street, Summit, call: 908-598-5548, or email: education@sageeldercare.org. Directors of organizations or businesses may also contact SAGE to obtain guides for distribution.

Since 1954, SAGE Eldercare has been helping make the communities it serves amazing places to age. The non-profit organization provides a wide array of information, support, and services designed to help individuals lead the most independent and active lives possible. From helping with errands and delivering Meals on Wheels, to exercise classes, community programs and support groups, Medicare counseling, care planning, an adult day health care center, and home health care, as well as the SAGE Resale Shop and Furniture Restoration Workshop, SAGE's expertise helps older adults remain independent in their own homes. SAGE is committed to being the leading provider of programs and services to meet the changing needs of older adults, their families, and caregivers in Union, Essex, Morris, and Somerset Counties. For more information, please call 908-273-5550 or visit sageeldercare.org.

Franklin H. Rainear Jr., Affordable Funeral Service & Cremation LLC

Affordable Simple Cremation, We Go Everywhere
Crematory Fee Included & Absolutely No Hidden Costs

888-213-4090

Franklin H. Rainear, Jr. Manager NJ Lic. No. 4543

1310 Prospect Street, Ewing, NJ 08638

Email: Funeralserviceandcremationco@gmail.com

www.affordablefuneralservicecremationco.com

MARIA HOBBIE

Nutritionist

Nutrition Education for Children and Families
Specializing in:

- Healthy Eating for proper weight management
- Specialty diets (Gluten free, Sugar free, Lactose free, etc.)
- Food allergies and intolerances

MGH Consulting USA, LLC

Mghconsultingusa@gmail.com

(908) 251-3607

Fully Insured

Free Estimates

Needleman Roofing

Lic. #
13VH06601300

SLATE - TILE - ASPHALT SHINGLES

908-389-0200



Knights of Columbus
INSURANCE
Making a difference for life.



Vince Creo, FICF

973-879-6381

vincent.creo@kofc.org

Life Insurance • Long-Term Care Insurance
Retirement Annuities • Disability Income Insurance

Let's start planning today for your tomorrow
Protecting Catholic families since 1882.

*You have questions on financing
long term care and protecting
your home and lifetime savings
WE HAVE ANSWERS
on how to preserve your assets
without losing control*



Donald M. McHugh, Esq. CELA. CAP
973-887-4254

49 Ridgedale Ave., East Hanover, N.J. 07936

- One of 450 Certified Elder Law Attorneys Nationwide
- One of 100 Members, Council of Advanced Practitioners
- "Super Lawyers" N.J. Monthly 11 consecutive years

Visit our website at
www.MeHughandMacri.com

Presentation Conducted At MADISON SENIOR CENTER

28 Walnut St., Madison, New Jersey

Thursday, December 20, 2018
10:00 A.M.

Please R.S.V.P. to Sara at
Madison Senior Center
973-593-3094

Keffers@rosenet.org

UGLY HOMES WANTED FOR TELEVISION PROGRAM IN THIS AREA

We need 30 Ugly Homes with Ugly Kitchens, Bathrooms, Siding, Window, etc., Inside or Outside that need fixing or Remodeling. We will Repair and Remodel them and shoot video for training film and future TV show on Home Remodeling Work.

Must Sign Release, for purpose of filming job! This must be a complete remodeling job, not just patch up work. This remodeling is to be specially priced out of work, with compensation back to the homeowner for signed release.

CALL 1-800-281-1582

Ask for TV Project Department,
for job evaluation and estimate
of cost and compensations!

Serious Inquiries Please!

DO YOU NEED A DUMPSTER?

Professional Delivery & Pickup

Affordable

Call to Reserve One Today

We take (but not limited to)...

General Construction

Household Waste

Concrete & Asphalt

Logs & Stumps

Demolition Debris

Bulky Waste



NJ DEP# S27236

908-234-2382

Fast, Friendly, Reliable Service

TOWNHOMES AT SUMMIT CROSSING

New Construction Luxury Townhome Rentals

785 Springfield Avenue, Summit, NJ 07901

- 3 Bedroom - 3 1/2 Bathroom
- 2 Car Garage - Fireplace
Starting at \$5200/month

Now
Accepting
Applications

Located just steps away from the
NJ Transit New Providence Station



For more information please visit our website at
www.SummitCrossingNJ.com

MADISON EAGLE CHRISTMAS FUND KICKS OFF HOLIDAY GIVING SEASON

Submitted by Kelly Bergin

The weather may have dampened some Madison Halloween traditions, but the Madison Eagle Christmas Fund (MECF) will continue to bring joy to many in town for the holiday season. MECF, a proud Madison tradition that has assisted thousands of Madison's families and seniors for more than 40 years, has begun collecting donations to help brighten the holidays for Madison residents in need. The MECF is a community effort with civics and religious groups, merchants, schools, volunteers and individual donors teaming up to help neighbors with financial challenges. Last year, the fund assisted 70 families and 60 senior citizens, providing holiday gifts such as coats, toys, books, and grocery and gas gift cards for close to 300 Madison residents.

MECF is once again seeking local residents to continue the tradition of "neighbors helping neighbors." MECF accepts both cash donations as well as gifts collected through area businesses and schools. Tax deductible cash donations, essential to the MECF mission, can be made through the insert provided in the October electric bill, by posting a check payable to the Madison Eagle Christmas Fund, P.O. Box 2, Madison, NJ 07940, or directly through the website at www.madisoneaglechristmasfund.org/monetary-donations/.

All three elementary schools (Central Avenue School, King's Road School, and Torey J. Sabatini School) are now collecting donations of NEW books, sporting equipment, school and art supplies (such as crayons and coloring books) as well as gloves, hats and mittens for children up to 12 years old. Gifts for "tweens" are especially needed. Boxes are located at all three school entrances so that children can easily drop the new, unwrapped items on their way into school. This year, the Madison Library also will have a box for the collection of new children's, teen and adult books. The collection boxes will be in place until December 12, 2018.

Madison merchants join the effort by serving as collection sites or providing discounts on gift cards that are purchased from the MECF. Some, like the Bar Method and Madison Pharmacy, are running their own promotions and using the proceeds to make a cash donation to the fund. The Madison Pharmacy is offering Madison-themed tote bags and will be contributing part of the proceeds to the MECF. The Bar Method is selling special discount cards for neighborhood businesses and donating proceeds to the MECF and other charities.

The following Chamber of Commerce members will be serving as drop-off stations. Toy Collection: Coldwell Banker, Provident Bank, Cleaners Advantage, Sugar Rush, Weichert, Lakeland Bank, Fulton Bank. Glove Collection: Adams Dental. Book Collection: Madison Library and Short Stories.

Many town businesses allow the MECF to purchase gift cards for the approved families and seniors at a discounted rate, stretching raised

funds even further. These merchants include: Alfred's Sports Shop of 32 Main St.; Ann's Nails of 65 Main St.; the Bagel Chateau of 45 Main St.; Bottle Hill Tavern of 13 Waverly Place; Burlington Coat at 240 Route 10 in East Hanover; Crowley Cupcakes of 9 Waverly Place; Drip Coffee of 34 Main St.; Frutta Bowl of 57 Main St.; La La Land Hair and Beauty Room of 36 Main St.; the Madison Pharmacy of 66 Main St.; Main Street Subs of 187 Main St.; the Marc Anthony Salon of 32 Lincoln Place; McCool's Ice Cream and Frozen Yogurt of 26 Main St.; the Nautilus Diner of 97 Main St.; Romanelli's Pizza and Italian Eatery of 42 Lincoln Place; Short

Stories Bookshop and Community Hub of 23 Main St.; Slamwich Scratch Kitchen at 143 Main St.; the Stop & Shop of 133 Main St.; Suburban Shop Shoes of 5 Waverly Place; Sugar Rush of 10 Waverly Place; T&J Sunoco at 31 Kings Rd; Tons of Toys of 64 Main St.; and Urban Fire of 6 Main St.

The MECF raises about \$30,000 annually and relies solely on donations and volunteers to cover operating expenses. To learn more about MECF and other donation opportunities in town, please visit our webpage at madisoneaglechristmasfund.org and like the group on Facebook.

RENNA MEDIA NEWSPAPER RATE SHEET

WE MAIL 125,000 NEWSPAPERS MONTHLY!

Tina Renna 908-418-5586
tinareнна@rennamedia.com

Joe Renna 908-447-1295
joerenna@rennamedia.com

202 Walnut Avenue
Cranford, NJ 07016
info@rennamedia.com

**Advertise
in 1 or all
21 towns**



Berkeley Heights NJ COMMUNITY NEWS Qty: 4,800 Mailed to every home and business. Zip: 07922	THE CHATHAMS NJ Qty: 7,400 Mailed to every home and business. Zip: 07928	Clark Monthly Qty: 6,700 Mailed to every home and business. Zip: 07066	CRANFORD MONTHLY NJ Qty: 9,800 Mailed to every home and business. Zip: 07016	Fairwood Post NJ Qty: 3,000 Mailed to every home and business. Zip: 07023	Garwood Times NJ Qty: 2,200 Mailed to every home and business. Zip: 07027	Green Brook Gazette NJ Qty: 3,000 Mailed to every home and business. Zip: 08813
BUSINESS + LIFE KENILWORTH NJ Qty: 3,600 Mailed to every home and business. Zip: 07033	Life in LINDEN NJ Qty: 12,500 11,000 mailed to homes and businesses. Zip: 07036	Long Hill LEADER NJ Qty: 3,600 Mailed to every home and business in Gilman Millington and Sebring. Zip: 07033, 07946, 07980	MADISON MONTHLY NJ Qty: 6,300 Mailed to every home and business. Zip: 07940	MOUNTAINVIEW NJ Qty: 2,800 Mailed to every home and business. Zip: 07092	New Providence NEWS NJ Qty: 4,800 Mailed to every home and business. Zip: 07974	The PRIDE of North Plainfield NJ Qty: 8,300 Mailed to every home and business. Zip: 07060, 07062, 07063
OUR TOWN Rahway NJ Qty: 6,000 5,000 mailed to homes and businesses. Zip: 07065	Scotch Plains NJ Qty: 9,600 Mailed to every home and business. Zip: 07076	Summit NJ Qty: 9,600 Mailed to every home and business. Zip: 07901	Spirit of UNION NJ Qty: 5,500 5,000 mailed to homes and businesses. Zip: 07085	WARREN MONTHLY NJ Qty: 6,200 Mailed to every home and business. Zip: 07049	Watchung Post NJ Qty: 2,800 Mailed to every home and business. Zip: 07069	Westfield NJ Qty: 11,800 Mailed to every home and business. Zip: 07090

NEWSPAPER AD RATES

Rates are per month. Artwork included in price. Newspapers are black on white.

Units	Size	RATE FOR ANY 1 NEWSPAPER	RATE FOR ANY 3 NEWSPAPERS	RATE FOR ANY 6 NEWSPAPERS	RATE FOR ANY 9 NEWSPAPERS	RATE FOR ANY 12 NEWSPAPERS	RATE FOR ANY 15 NEWSPAPERS	RATE FOR ANY 18 NEWSPAPERS	RATE FOR ALL 21 NEWSPAPERS
1 Unit (Business card)	3.25" x 2"	\$60	\$150	\$250	\$350	\$400	\$450	\$500	\$550
2 Units	6.5" x 2" or 3.25" x 4"	\$100	\$250	\$400	\$500	\$600	\$700	\$800	\$900
4 Units	3.25" x 8" or 6.5" x 4"	\$180	\$450	\$700	\$900	\$1100	\$1300	\$1500	\$1700
6 Units	6.5" x 6.25" or 10" x 4"	\$240	\$600	\$900	\$1200	\$1400	\$1600	\$1800	\$2000
9 HALF PAGE	6.5" x 9" or 10" x 7"	\$320	\$800	\$1000	\$1300	\$1600	\$1900	\$2200	\$2400
12 Units	10" x 8"	\$360	\$900	\$1200	\$1500	\$1800	\$2100	\$2400	\$2700
18 FULL PAGE	10" x 14"	\$400	\$1000	\$1400	\$1800	\$2200	\$2500	\$2800	\$3000
2 PAGE SPREAD	21" x 14"	\$700							
BACK PAGE	10" x 4"	\$500							
FRONT PAGE BANNER	8.25" x 2"	\$320							
FRONT PAGE BOX	1.5" x 4.5"	\$240							

Back cover, fold, page banner and front box reserved on first order; first served basis. Content after first has right of first refusal.

PREPAY FOR 6 MONTHS AND GET 1 FREE

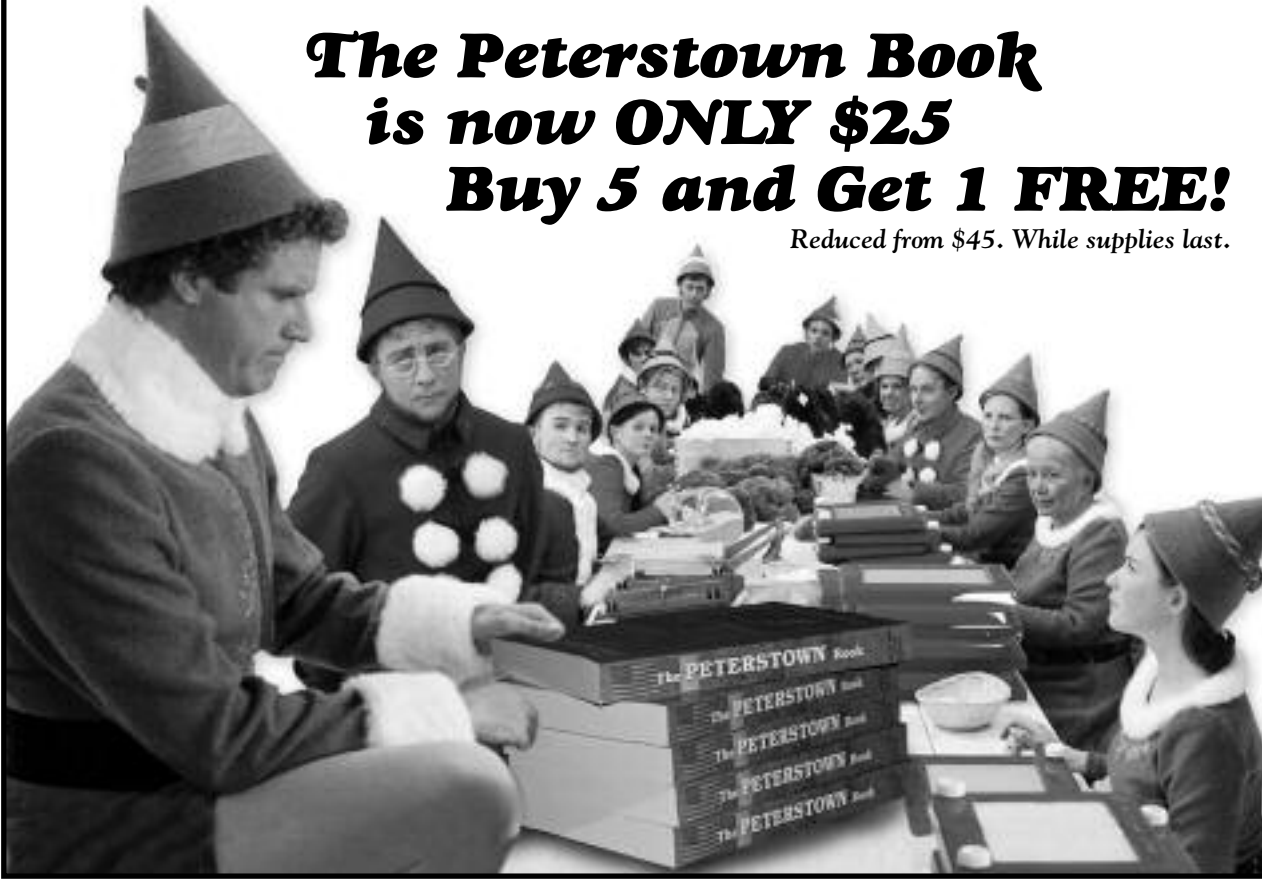
Make Checks payable to Renna Media, 202 Walnut Avenue, Cranford, NJ 07016

Visit RennaMedia.com for online publications.
Photo albums, video and advertising opportunities.

CHRISTMAS GIFT GIVING MADE EASY!

The Peterstown Book
is now **ONLY \$25**
Buy 5 and Get 1 FREE!

Reduced from \$45. While supplies last.

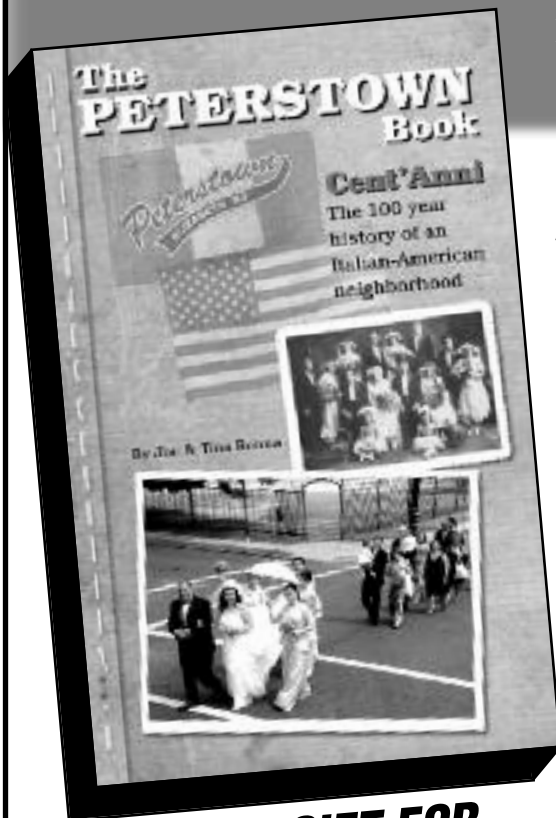


The PETERSTOWN Book

NOW ONLY \$25!

By Joe &
Tina Renna

Book



**GREAT GIFT FOR
CHRISTMAS GIVING**

ORDER NOW!

- On line at PeterstownNJ.com
- By phone 908-418-5586
- Mail Check and form to:
Renna Media
202 Walnut Ave.,
Cranford, NJ 07016
- Email inquiries to:
info@rennamedia.com



Cent'Anni

The 100 year history
of an Italian-American
neighborhood

- **776 Oversized Pages**
- **Thousands of Photos**
- **Hundreds of Recipes**

The Peterstown Book is the 100 year history of an Italian-American neighborhood told through stories about the people and families who lived there. The book records the oral history in danger of being lost and illustrates the traditions and customs of the community through thousands of photos, hundreds of recipes, and antidotes shared by residents past and present.

\$25 +\$1.75 Sales Tax

BUY 5 BOOKS & GET 1 FREE: \$125 +tax

FREE Shipping

Number of Books: _____

Amount of check _____

Name _____

Address _____

Phone _____

Email: _____

WOOD FLOORS

Sand • Stain • Refinish • Repairs

W/W CARPET & RUGS

Clean • Stretch • Sanitize • Repairs • Bind

RESTOREMYFLOORS.NET

A DIVISION OF CARPET DOCTOR LLC.

116 SUSSEX ST. WESTFIELD, NJ

908-342-5048

Insured * References * Visa / MasterCard

MR. HANDYMANNY

A Division of Carpet Doctor LLC.

NJ License # 13vh06607700

**Odd Jobs, Cleanouts
& Handyman Services**

Don't bust your fanny. Call Manny!

Insured • References • Affordable

Cash • Checks • Credit Cards

908-342-5048



Robert Compton

Custom Made Electric Guitars

Unique Tie Dyed Design

Repairs

O: 908-350-8175

C: 908-963-5646

ComptonGuitarInsider@gmail.com

Visit us on Facebook [comptonguitarsllc](https://www.facebook.com/comptonguitarsllc)
324 Somerset St. #5, Stirling, NJ 07980

**Don't let your family
memories fade away**

HOME MOVIES TRANSFERRED TO DIGITAL FILES & DVD

- Video Tape Transfers
- DVD & Flash Drive Duplication
- Audio Cassette to CD
- Reel to Reel Audio to CD
- LP to CD
- High Speed Photo & Slide Scanning
- Foreign Conversions

Video Production & Editing

Training • Sales • Documentary

VIDEO DATA SERVICES®

locally owned since 1984

www.vdsnj.com

facebook.com/vdsnj

email: ira@vdsnj.com

908-964-4004

406 Chestnut St. • Union, NJ 07083

**2018
YEAR END**

PIANO LIQUIDATION SALE

EVERYTHING MUST GO TO MAKE ROOM FOR NEW INVENTORY

No Legitimate Offer Refused!

SAVE 40% to 80% OFF MSRP

Now Thru

SUNDAY - DEC 30

OPEN SUNDAYS | 11AM to 5PM



Call For Info
973-886-7414

FREE FINANCING*

FREE DELIVERY**

FREE TUNING

FREE BENCH



OVER 100 PIANOS!!!

**BALDWIN • STEINWAY • YAMAHA • KAWAI
SCHULZE-POLLMAHNN • HALLET & DAVIS BOSTON
J. STRAUSS & SON • YOUNG CHANG • WM. KNABE
WEBER • CASIO DIGITALS & HYBRID GRAND**

MANY ONE OF A KIND • GUARANTEED LOWEST PRICES IN THE USA

B Natural Pianos & Music School

SALE HELD AT: Rockaway Plaza • 295 Rt.46, Rockaway, NJ • Tel: 973-983-8800 | www.pianocloseouts.com

Open: Mon - Thurs 11am - 9pm / Fri 11am - 8pm / Sat 10am to 6pm / Sun 11am - 5pm / CLOSED CHRISTMAS DAY

*** Free Financing up to 12 months for qualified buyers | ** Free Delivery on New Pianos | Split Delivery on Used Pianos**