

New Providence NEWS

Published by Renna Media

Issue 26 • November 2017

BUYING OR SELLING?

Don't let this active fall market pass you by!

Let a seasoned Real Estate professional lead you in your search for that perfect house or buyer for your home.



EILEEN SERGENT

Direct (Cell) 908 230-4800

NJAR Distinguished Sales Club
NJAR Circle of Excellence '92-2016
**LET MY EXPERTISE BE THE KEY
TO YOUR REAL ESTATE SUCCESS!**



**401 SPRINGFIELD AVE
SUMMIT, NJ
OFFICE: 908-522-1800**

PRSRT STD
U.S. POSTAGE
PAID
PHILA PA 191
PERMIT NO.7575

ECRWSS

*****ECRWSSDDM*****
**POSTAL PATRON
NEW PROVIDENCE, NJ 07974**

THE GREAT PUMPKIN CARVING CONTEST

On Saturday October 21st, New Providence PBA Local #132, along with the Lions Club and the Municipal Alliance hosted the Great Pumpkin Carving Contest at Centennial Park. The pumpkins were placed on stands around Centennial Park for all to enjoy along with seasonal snacks and treats. Prizes were awarded for the winning pumpkins.

Photos from this and other events can be found online at rennamedia.com and on the New Providence News page on [facebook.com](https://www.facebook.com) Feel free to "Like", "Tag" and "Share".



Colonial
APPLIANCE

**Discount Prices Plus
FREE Local Delivery!**

Our 37th year serving the tri-state area.



**GE COOKING
SALE!**

908-665-1212

25 Passaic Street
New Providence, NJ 07974

colonialappliance.com

NEW PROVIDENCE HISTORICAL SOCIETY PRESENTS "HISTORY TALKS"

New Providence NEWS is published by Renna Media. 4,700 newspapers are printed monthly and mailed to every business and resident in New Providence.

Although great care has been taken to ensure the information contained within is accurate, Renna Media assumes no liability for errors or omissions.

© 2017 Contents of this newspaper cannot be reproduced without written consent from Renna Media LLC.

**To submit content
call Tina at 908-418-5586
Email: editor@rennamedia.com**

**New Providence NEWS
is online at
www.rennamedia.com
like us on
[facebook.com/
New Providence NEWS](https://www.facebook.com/NewProvidenceNEWS)**

Advertise in this newspaper



**4,700 papers
are printed
monthly
and mailed
to every home
and business
in New
Providence.**

**Reserve space in the next issue.
Call Tina today at 908-418-5586
or email info@rennamedia.com**

"History Talks" is a new series of speakers in 2017 presented by the New Providence Historical Society covering topics relating to New Providence, Union County and New Jersey.

On November 16th, Linda Barth will give a presentation on "A History of Inventing in New Jersey: From Thomas Edison to the Ice Cream Cone." Many people are familiar with Edison's "invention factory" in Menlo Park, where he patented the phonograph, the light bulb, and many more innovations. Yet many other ideas have grown in the Garden State, too. New Jerseyans brought sound and music to movies and built the very first drive-in theater. In addition to the first cultivated blueberry, tasty treats like ice cream cones and M&M's® are also Jersey natives. Iconic aspects of American life, like Bubble Wrap®, the boardwalk, the Band-Aid®, and even professional baseball itself started in New Jersey. Life would be a lot harder without the vacuum cleaner, plastic, and air-conditioning, and many other important advances in medicine and surgery were developed here.

Join author Linda Barth as she explores groundbreaking, useful, fun, and even silly inventions and their New Jersey roots.

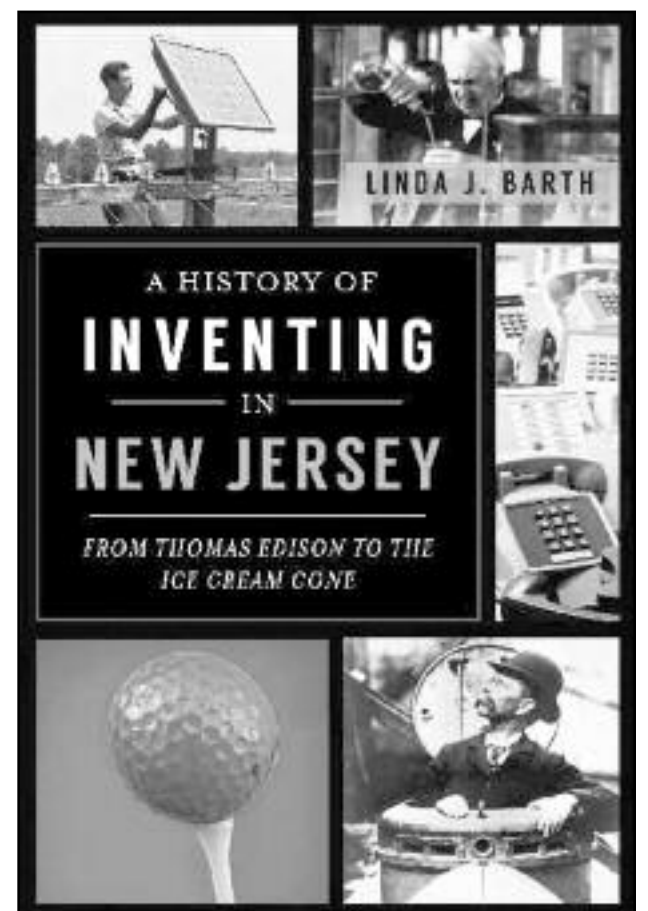
Linda Barth has been a fan of New Jersey for a long time. As a fourth-grade teacher, she tried to focus students' attention on the positive aspects of our state: its diverse geography, history, agriculture, industry, and famous firsts and inventions. A lifelong resident of the Garden State, Linda has written two books on the D&R Canal for Arcadia Publishing and two children's picture books: Bridgetender's Boy, published by the National Canal Museum in 2005, and Hidden New Jersey, from Charlesbridge Publishing in 2012. A History of Inventing in New Jersey: From Thomas Edison to the Ice Cream Cone, published by the History Press, was released in 2013. With her husband she has published The Millstone Valley Through Time and Somerville Through Time. She has also contributed to the Encyclopedia of New Jersey. She is just

completing a second book on New Jersey inventions. In 2016 Linda received the Spirit of Somerset Award for Culture and Heritage.

The presentation is free to the public and will be held in the Conte Room in the New Providence Memorial Library, 377 Elkwood Avenue, New Providence, 6:30 - 8:45 p.m. on November 16.

This presentation of "History Talks" is being sponsored by The Murray Hill Hotel and Suites and Moe's Bistro (located at 535 Central Avenue, New Providence).

The New Providence Historical Society is a volunteer organization dedicated to recording and preserving the history of New Providence, NJ. The society maintains the Salt Box Museum and the Mason Room Archives. For more information about the Historical Society call 908-665-1034.



SAT and ACT Tutoring English, Reading and Writing



- Students will develop the skills to improve their SAT and ACT scores. We focus on Critical Reading, Grammar, Sentence Structure, Vocabulary, & Writing.

**College Application
Essay Development**

- Students will develop dynamic essays for the Common Application and individual college applications.

**As seen in the February issue of New Providence News for helping a local student go from a 26 to a perfect 36 on the ACT.*

**Kristen Angelo
PreferredResultsTutoring.com
732-713-9458
PreferredResultsTutoring@gmail.com**

GO FAR

**PREPARING YOUNG MINDS
TO CHANGE THE WORLD.**

A co-educational day school for PreK-Grade 8





**Far Hills, NJ | fhcds.org
#falconpride**

MURSELI PRO CONSTRUCTION

908-361-6372

Family
Owned &
Operated For
15 Years

- All Work Guaranteed
- 24/7 Emergency Service
- 20% Senior Discount
- Major Credit Cards
- NJ Lic. 13VH08570100



Carbon Monoxide
is invisible,
odorless,
and can kill you!

MASONRY



- DRIVEWAYS
- STEPS
- BRICK & BLOCK
- SIDEWALKS
- REPAIR

ROOFING



- RE-ROOF
- NEW ROOF
- ROOF REPAIRS
- SHINGLES
- FLAT ROOF

CHIMNEY



- CLEANING
- RE-LINE
- REPAIRS
- REBUILD
- CAPPING

GUTTERS



- CLEANING
- INSTALLATION
- SCREENING
- REPAIRS
- REPLACEMENTS

Special! CHIMNEY LINER \$1300

Why Should I Use A
Chimney Lining System?

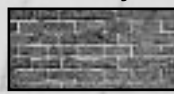
- Protect your house from heat transfer combustibles
- Protect the masonry from the corrosive by products of combustion
- Provide a correctly sized flue for optimum efficiency of appliance



Fire
Safety



Improved
Performance



Long Term
Preservation



Easy & Effective
Cleaning

FREE ESTIMATES

Fall Special

COMPLETE SET OF STEPS

Up to 6 Feet, 5 Steps / Brick, Limestone & Concrete

\$2,600

With coupon. Cannot be combined
with any other offer. Expires 12/6/2017

\$1000 OFF

or FREE GUTTERS
ANY COMPLETE ROOF

With coupon. Cannot be combined with any other offer.
Expires 12/6/17.

\$79.99

GUTTERS CLEANING
(Any Average House)

With coupon. Cannot be combined with any other offer.
Expires 12/6/17.

\$150 OFF

ANY ROOF REPAIR
of \$500 or more

With coupon. Cannot be combined with any other offer.
Expires 12/6/17.

\$200 OFF

ANY CHIMNEY REPAIR
of \$800 or more

With coupon. Cannot be combined with any other offer.
Expires 12/6/17.

SCOUTING FOOD DRIVE KICKS OFF NOV 11

New Providence's Boy Scouts and Cub Scouts will once again join together with Faith Lutheran Church for the 2017 Scouting for Food drive. Now in its 36th year, this community-wide event collects non-perishable items for local food pantries as well as families and individuals served by the Community Service Association of New Providence.

The Boy Scouts and Cub Scouts will deliver grocery bags to Borough residents' homes on Saturday, November 11. On Saturday, November 18, they will return to pick up the filled bags and bring the food items to Faith Lutheran Church on South Street where they will be sorted, packed, and prepared for distribution to the Starfish Food Pantry.

A portion of the food items are given to struggling New Providence families who receive assistance from the CSA.

Hilary McCarron, New Providence mom and volunteer organizer for the Boy Scouts/Cub Scouts, said, "Last year over \$36,000 in non-perishable food was collected through the generosity of New Providence residents. As we look ahead to the holiday season, we are mindful that there are those who struggle financially to put food on their table. Our scouts in the town of New Providence have exemplified the scout oath

by taking part in this drive. We thank the New Providence community and our local supermarkets for their generous support."

She reminded drivers that kids will be out and about on these two days, "We ask local drivers to use caution as the boys head door-to-door and cross streets for this important effort."

In addition to staples such as pasta, soup, and cereal, other items needed for the food drive include mayonnaise, ketchup, mustard, pancake mix, and pancake syrup. The groups respectfully

ask that residents do not send in food items past their expiration dates.

Scouting for Food would not be possible without the support of area grocery stores including ACME in New Providence, Kings in Summit, ShopRite in Stirling, and Stop & Shop in Berkeley Heights. These stores generously donate more than 5,000 grocery bags to the cause.

For more information, contact: John Malinauskas at the CSA (908) 665-8254.



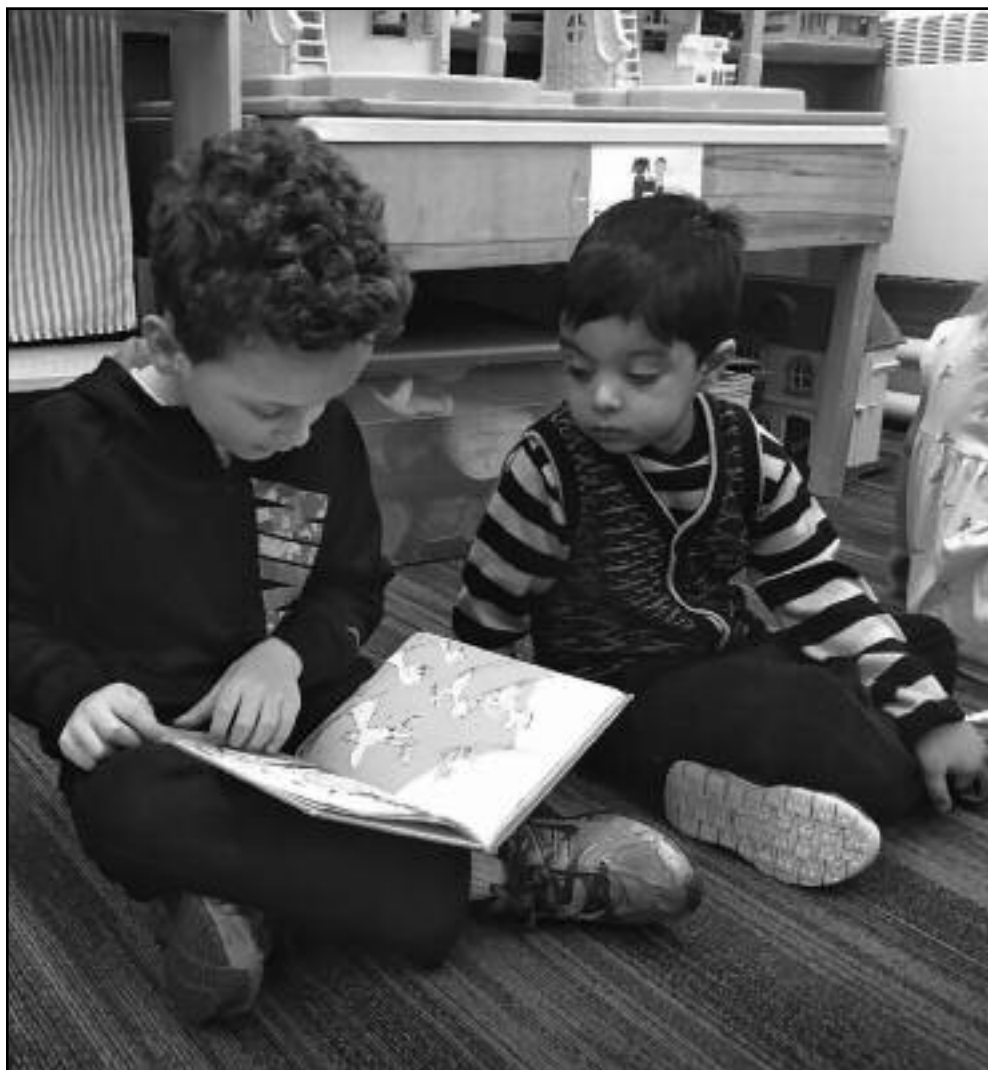
(above) Boy Scouts from Troop 63 in New Providence, preparing the shopping bags that get to delivered to each house.



Julia DeMilio
DOG WALKER & PET SITTER
908-370-3700
juliademilio@gmail.com

Experience with dogs and cats
of all ages, breeds, and special needs,
as well as all types of
medication administration

ALL BREEDS, ALL NEEDS



LEARNING A LIFETIME OF TEAMWORK

Learning how to work with your fellow students is one of the many life lessons your child can take with them long after they graduate **The Academy of Our Lady of Peace**. It's a philosophy that's woven into our tight-knit Catholic community. From Pre-K through 8th grade, learning goes far beyond our academic programs. **For more information:** 908-464-8657 • OfficeofAdmissions@theacademyolp.org theacademyolp.org

Fall/Winter 2017-18 Open House Schedule

Sunday, November 12 • 10 a.m. - 12:30 p.m.
Sunday, January 28, 2018 • 10 a.m. - 12:30 p.m.



**THE ACADEMY OF
OUR LADY OF PEACE**

99 South Street
New Providence, NJ 07974

Downsize Your Space Upsize Your Lifestyle



YOUR NEW BEGINNING! WARREN INDEPENDENT LIVING!



- Brand new, spacious 1 & 2 bedroom apts
- Bistro and Club Room with library, movies, games, events, entertainers
- Exercise room and weekly exercise class
- Daily Continental Breakfast and Cocktail Hour
- Weekly hot lunch, special dinners
- On-site doctors appointments available
- Underground parking; intercom system

NO BUY-IN REQUIRED!

"I love the hassle-free living.
I finally have time to enjoy life."
-Dick B, resident



"The key for me was no buy-in
required."
-Martha B, resident



THE CHELSEA
AT WARREN

INDEPENDENT LIVING

274 KING GEORGE ROAD | WARREN, NJ 07059

CHELSEASENIORLIVING.COM

Come visit today! Call Linda at 908-903-0911

SANTA CLAUS SHOP IN SUMMIT GEARS UP TO SERVE LOCAL FAMILIES

The Santa Claus Shop will open its doors to area families, providing its 51st consecutive year of complimentary holiday shopping. The shop serves more than 400 low-income families and senior citizens from Summit, New Providence and Berkeley Heights who are referred by local social services agents.

The Santa Claus Shop guests personally select a household item, new clothing for each member of their immediate family, a hat and mittens, a book, and a new toy for each child. Local volunteers are responsible for the shop setup, personal shopping services for each guest, gift-wrapping and clean up.

This year's Santa Claus Shop will be held at St. John's Lutheran Church, 587 Springfield Avenue in Summit. The Santa Claus Shop will be hosting a holiday gathering for senior citizens Tuesday, November 28th. Families will be offered shopping hours by invitation only on Wednesday, November 29th.

The Santa Claus Shop is chaired by Summit residents, Denise Holmes, Laura Lameo, Jenn Moore and Diana Moran and co-chaired by Liz Febo, Kourtney Matter, Franny McBride and Shelley Sherman.

The Santa Claus Shop exists solely on donations and volunteers. With the monetary donations from area residents, local organizations and businesses, the Santa Claus Shop can purchase the gifts that allow less fortunate neighbors to experience the joy of holiday giving without financial burden.

To keep the holiday spirit alive for those in the

community, the Santa Claus Shop chairwomen ask for checks to be made payable to SHIP, with Santa Claus Shop noted on the check's memo line, and mailed to the Santa Claus Shop, P.O. Box 119, Summit, NJ 07901.

The ability to make an online donation is also available at www.summitsantaclausshop.com. If you would like to find out more information or get involved please visit our website or follow us on Facebook at Santa Claus Shop - Summit, NJ.



(above l-r) This year's chairwomen Denise Holmes, Diana Moran, Laura Lameo and Jenn Moore.

NOVEMBER EVENTS AT NEW PROVIDENCE MEMORIAL LIBRARY

New Providence Memorial Library is located at 377 Elkwood Avenue, New Providence and can be reached by calling 908-665-0311.

New Providence Memorial Library is located at 377 Elkwood Avenue, New Providence and can be reached by calling 908-665-0311.

The Knitting Club meets twice this month **Monday, November 6 & 20 at 7 p.m.**

Bring a project you are working on or get instruction on a knitting or crocheting project you would like to start.

The library will be closed **Saturday, November 11**

in observance of Veteran's Day. We will re-open on Sunday, November 12 for our regular hours of 1 p.m. to 5 p.m. We will also be hosting DYAD, a duo of innovative musicians who will be performing delightful jazz versions of opera arias at 3 p.m.

The Baseball Club
will probably be talking about the
World Series at its regular monthly meeting
Monday, November 13 at 7 p.m.
Anybody with an interest in baseball is welcome to come and talk about your favorite team, players or just listen.

Jennifer Luster will be joining us **to share some healthy and delicious recipes** **for vegetable side dishes** **just in time for Thanksgiving.**

On Tuesday, November 14 at 7 p.m.
Jennifer is the nutritionist at Shop Rite in Chatham. Her visits always include lots of healthy tips and delicious samples! This program is free but please call ahead so that we have an idea of quantities.

The Thursday Morning Book Group
meets for the last time this year
Thursday, November 16 at 10 a.m.
to discuss *The Big Burn* by Timothy Egan.
All are welcome. Copies of the book are available at the front desk.

NPML will be closing at 1 p.m.
on Wednesday,
November 22 and will be closed
November 23-24 in observance of the Thanksgiving holiday. We will re-open on Saturday November 25 for our regular hours from 9 to 5.

Certified child counselor Lisa Di Sciullo **will join us**

Tuesday, November 28 at 7:30 p.m.
to discuss "Why Don't my Kids Listen to Me?" Lisa is an engaging and knowledgeable speaker and will be providing practical and useful information on communication and discipline for children school age to young adult. As always, there is a full schedule of movies available. Please see the library calendar on our website for full dates, times and descriptions.

For the younger set, there are
Story times and baby lap-sits
Mondays and Wednesdays.
Bigger kids, around ages 4-6, have a special storytime on Tuesdays and Thursdays that includes a craft. And don't forget about Lego Club, now on the 4th Tuesday of the month at 3:30 in the Coddington Room.
A full calendar of events including regular meetings of morning and evening book clubs, the Knitting Club, the Baseball Club, movies and kids' events is available at www.newprovidencelibrary.org. All events are FREE and open to the public.



HIBACHI GRILL

supreme buffet

**Serving
LOBSTER or CRAB LEGS
with other Special Items
Every Holiday**

For more information, please call

908-490-1600

Fax: 908-490-1601

www.hibachigrillandbuffetnj.com

BLUE STAR SHOPPING CENTER



Large Parking Lot to Accommodate our Customers

10% DISCOUNT
Seniors 60+, Military,
Police, College Students
Hibachi Grill Supreme Buffet (Show ID)

1701 U.S. Highway 22 West • Watchung



MONDAY - THURSDAY

Lunch 11am - 3:30pm

Adult\$7.99
Kids 7-10.....\$5.99
Kids 3-6.....\$3.99
2 & Under.....FREE!

Dinner 3:30pm - 10:00pm

Adult\$11.99
Kids 7-10.....\$7.49
Kids 3-6.....\$5.99
2 & Under.....FREE!

FRIDAY - SATURDAY

Lunch 11am - 3:30pm

Adult\$7.99
Kids 7-10.....\$5.99
Kids 3-6.....\$3.99
2 & Under.....FREE!

Dinner 3:30pm - 10:30pm

Adult\$11.99
Kids 7-10.....\$7.49
Kids 3-6.....\$5.99
2 & Under.....FREE!

SUNDAY ALL DAY DINNER

11am - 10pm

Adult.....\$11.99
Kids 7-10\$7.49
Kids 3-6\$5.99
2 & UnderFREE!

GIFT CERTIFICATES AVAILABLE

SUSHI

**Fantastic range of freshly prepared sushi.
Most selection and top quality among all competitors.
It is far from the typical "buffet quality" sushi.
At HIBACHI, you don't sacrifice taste for price.**

BUFFET

**Elegant, modern, fresh, executed with care and
confidence. HIBACHI Grill Supreme Buffet brings together
250+ of fresh-made Asian dishes in eleven buffet bars.**

HIBACHI

**Choose your favorite ingredients from dozens of seafood,
meats and vegetables. Watch our chef preparing them in
our special hibachi sauce to create a full-flavored dish.**

ASK US ABOUT CATERING YOUR NEXT EVENT!

We have a large party room available for birthday parties, office meetings & weddings.

\$125 OFF
ADULT BUFFET

With purchase of a beverage per person
Watchung • 908-490-1600
Cash Only. Limit 4. Not valid with any other
offers or discounts. Expires 12/10/17.

\$250 OFF
**2 ADULT
BUFFETS**

With purchase of a beverage per person
Watchung • 908-490-1600
Cash Only. Limit 4. Not valid with any other
offers or discounts. Expires 12/10/17.

\$10 OFF
**ANY ONE
PARTY**

Of \$100 or more. Monday - Thursday Only.
Watchung • 908-490-1600
Cash Only. Limit 4. Not valid with any other
offers or discounts. Expires 12/10/17.

\$500 OFF
**4 ADULT
BUFFETS**

With purchase of a beverage per person
Watchung • 908-490-1600
Cash Only. Limit 4. Not valid with any other
offers or discounts. Expires 12/10/17.

SUMMIT PLAYHOUSE PRESENTS BRIDGES OF MADISON COUNTY

The Summit Playhouse will present the Tony Award-winning musical "The Bridges of Madison County" this November. Performances are November 3, 4, 10, 11, 17 and 18 at 8:00pm and November 5 and 12 at 2:00pm.

The Summit Playhouse is located at 10 New England Avenue, Summit, NJ and tickets can be purchased online at www.brownpapertickets.com/event/3081773.

Based on the best-selling novel, "The Bridges of Madison County" tells of a forbidden love affair between a photographer and a housewife that changes them forever. The musical captures the lyrical expanse of America's heartland along with the yearning entangled in the eternal question "What if...?" Winner of the 2014 Tony Award for Best Score and Orchestrations, this sweeping romance about the roads we travel, the doors we open and the bridges we dare to cross will leave audiences breathless.

The cast includes Tina Kaye, Sean Finnerty, Sal Vararro, Jodi Freeman Maloy, Rich Maloy, Samantha Kaplan, Sean Switzer, Anna Lovallo, Catherine Flynn, Will K Carey, Kathleen Mals, and Kevin Ohlweiler.

For more visit:

www.thesummitplayhouse.org

908-273-2192

or summitplayhouseinfo@gmail.com

HOLIDAY FESTIVAL EVENT KICKS OFF FRIDAY, NOV 24 ON SOUTH STREET AND CONTINUES ON SMALL BUSINESS SATURDAY, NOV 25

The all new 2017 Holiday Festival, featuring the Christmas Walk, International Celebrations, and fireworks, kicks off Friday, November 24 on South Street and continues on Small Business Saturday, November 25.

The annual Christmas Walk, an evening gathering traditionally held on the Friday after Thanksgiving in the downtown area, will be part of the even bigger and better Holiday Festival in 2017. The festival will feature the arrival of Santa; various customs and celebrations from around the world; and Friday night fireworks!

The event continues the next day with offers and activities on Small Business Saturday. This huge event will take place in downtown New Providence and will offer food, activities, entertainment, raffles, giveaways, and more!

The New Providence Business Community hosts numerous celebrations and activities for the enjoyment of New Providence residents and visitors.

To become a sponsor of the Holiday Festival please email communications@npbpa.com or call 908-665-1400 ext. 8232.

COAT DRIVE COLLECTING UNTIL DEC 10

The New Providence Policeman's Benevolent Association is proud to announce the return of the coat drive. We will be collecting clean, gently-used coats beginning November 1 and concluding December 10. Please drop off a coat in the box in the lobby of the police department.

More than just an article of clothing, your coat can open opportunities for someone who needs one. You can enable a job-seeker to continue his search during the winter. You can enable a student to focus on her studies in a cold classroom. Or, you can help a senior go out for medication in a storm.

What to you is a coat hanging in the back of your closet can be a life-changing support for someone in need.

Jersey Cares plans to collect and distribute more than 30,000 "gently used" winter coats to men, women, and children in need throughout New Jersey through

The 22nd Annual Jersey Cares Coat Drive. Over the past 21 years, Jersey Cares has collected, sorted, and distributed more than 500,000 coats for New Jersey residents through their Annual Coat Drive. Help keep our neighbors warm this winter! Donate a gently used coat!



**THE
BRIDGES
of
MADISON
COUNTY**

**Comes to the Summit Playhouse
NOV. 4-18, 2017**

For Tickets: www.thesummitplayhouse.org

UP NEXT: Kaleidoscope Theatre for Youth's Elf, Jr. (Dec 8-17)
Boeing Boeing (March 2-17) and To Kill A Mockingbird (May 4-20)

THE SUMMIT PLAYHOUSE | 10 NEW ENGLAND AVENUE, SUMMIT, NJ



ZITA'S TREES

**HIGH QUALITY CHRISTMAS TREES
AT LOW PRICES**

- Wreaths plain & decorated
- Grave Blankets
- Garland & Roping

**OPENED EVERY DAY
9 am – 9:30 pm
STARTING FRI. NOV. 24TH**

**We Offer
Tree Drilling**

**1790 Springfield Avenue
New Providence**

(Located behind Zitas Ice Cream)



**\$800 OFF
ANY NEW
ROOF**



800 . 206 . 8529

CALL FOR A FREE ESTIMATE

CHIMNEY • MASONRY • GUTTER • ROOFING • SIDING

24/7 EMERGENCY SERVICE

**15% SENIOR
DISCOUNT**

**15% OFF ANY
MASONRY JOB**

**ALL JOBS
GUARANTEED!**

FULL INSURED

LIC# 13VH09057400



ROOFING

- Re-Roofing
- New Roofs
- Roof Repairs
- Shingles
- Flat Roofs



GUTTERS

- Cleaning
- Installation
- Screening
- Repairs
- Replacement



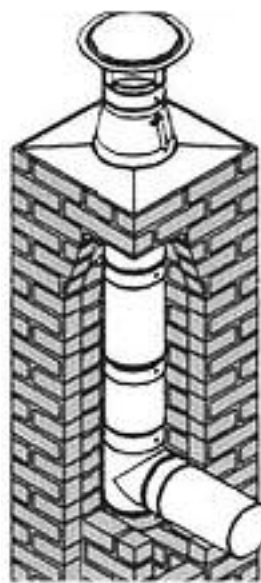
MASONRY

- Driveways
- Steps
- Repair
- Brick & Blocks
- Sidewalks



CHIMNEY

- Cleaning
- Rebuild
- Repairs
- Capping



CHIMNEY LINING SYSTEM

Benefits:

- Protect your house from heat and corrosion
- Improve the performance of your furnace
- Easy and effective cleaning

**15% OFF
SENIOR
CITIZEN
DISCOUNT**

MAGIC IMPROVEMENT
800-206-8529

With this coupon. Coupon may not be combined with any other offer.

**\$125 OFF
ANY
CHIMNEY
REPAIR**

MAGIC IMPROVEMENT
800-206-8529

With this coupon. Coupon may not be combined with any other offer.

**\$300 OFF
ANY JOB
\$2,000 OR MORE**

MAGIC IMPROVEMENT
800-206-8529

With this coupon. Coupon may not be combined with any other offer.

**\$250 OFF
ANY ROOF REPAIR
\$800 OFF
ANY NEW ROOF JOB**

MAGIC IMPROVEMENT
800-206-8529

With this coupon. Coupon may not be combined with any other offer.

ENJOY A SCANDINAVIAN SHOPPING SPREE IN NEW PROVIDENCE

On Saturday November 18, 2017 Lodge Linne #429 Vasa Order of America will sponsor a unique day of shopping, culture, and camaraderie. The 39th annual Scandinavian Import and Gift Sale will be held at Salt Brook School, located at 40 Maple St in New Providence, NJ (off Springfield Ave). The sale will be open to the public between 10:00 a.m. and 3:00 p.m.

The sale will feature a wide variety of traditional holiday and everyday Scandinavian items made from silver, pewter, amber, wood, paper, wool, straw and other materials. These gift and handicraft items are either manufactured in one of the Nordic countries or are designed in a Scandinavian style or motif and manufactured elsewhere.

Many of the traditional Scandinavian decorating items will be offered, including a large variety of elf-like tomten, Jul Bock, which are straw goats, in all sizes, painted Dala horses, and many Christmas ornaments. Among paper items for sale will be a wide selection of Advent calendars, including those filled with chocolate candy, Carl Larsson calendars, Christmas cards, and stationery. An assortment of table linens will be available, including runner fabric by the yard for both Christmas and everyday use. For the home one will find trays, baking needs, aprons, knives, a large variety of Danish wrought iron candleholders, and wooden candleholders for Christmas and general use. Personal items will include lovely sweaters from Dale of Norway for men and women in both cardigan and pullover styles. The jewelry department has been expanded to include Norwegian silver solje,

pewter and amber pieces designed as necklaces, earrings and pins.

We will be selling a large variety of Scandinavian baked goods, such as limpa bread, coffee braids, and pastries. Imported foods that will be sold include cheeses, such as authentic Farmers cheese, several types of herring and mackerel, lingonberries and cloudbberries, and various chocolates and marzipan.

Coffee and Danish pastries will be served beginning at 10:00 a.m. followed by a light lunch of Scandinavian open-faced sandwiches and pastries starting at 11:00 a.m. Drawings for door prizes will be held frequently during the day.

Proceeds from the Import Sale benefit many local organizations and charities such as First Aid Squads, Volunteer Fire Departments, local libraries, high school scholarships, Sage, Cherished Creations and we sponsor a local

softball team in New Providence. A portion is also donated to the local Vasa Order to be used for Scandinavian cultural programs and scholarships. Admission is free. The event is handicap accessible. Only cash and checks accepted. For more information, call Karen (908) 665-1292, Sandy Olson (973) 479-7873 or Judy (908)-464-0139.

Lodge Linne No. 429, Vasa Order of America, is a non-profit organization originally for individuals of Scandinavian descent. However, membership has now been opened up to also include people who are interested in Swedish and Nordic heritage and culture. For further information about membership contact: Vibeke (908-464-0425) or Judy (908-464-0139). The Lodge meets on the third Friday of each month at the DeCorso Community Center on Fourth St. in New Providence.



(above) Members of the Linne #429, Vasa Order of America, a Swedish fraternal organization, pose with Swedish tomtar. This year's annual Scandinavian Import and Gift Sale will be held on Saturday, November 18.

Mila's Debut
Ludmila Kozlova
Director
School of Music

732-424-0101
www.milasdebut.com
513 Warrenville Road • Suite 1 • Warren, NJ

STRAWBERRY FIELDS
INTRODUCES
ACAI DINNER BOWLS!
(Less sugar more protein) Served From 5-8 p.m.
Stay Healthy, Stay Strong, All Winter Long

SIGNATURE SMOOTHIES
20% OFF
ANY DAY, ANY TIME, OF THE WEEK
With this coupon.

12 South Street, New Providence NJ
908-464-2122

Cottage Computers®
"Our Service Makes The Difference"

RETAIL STORE & SERVICE CENTER
info@cottagecomputers.com
3 Lyons Mall
Basking Ridge, NJ
908-953-0386
www.cottagecomputers.com

Cartridge World
PRINTERS | INK & TONER | SERVICE & SUPPLIES

Cartridge World- New Providence
1310 Springfield Avenue
New Providence, NJ 07974
908-771-9696
www.cartridgeworldusa.com/store83
cworldnp@yahoo.com

Ask about our No-Cost Printer Program

\$2 OFF
INK REFILLS

\$5 OFF
TONER REFILLS
With a \$20 min. purchase. Not valid with other offers. Present at time of purchase. Exp. 12/31/18

Combine Your Home and Auto Insurance and Save!
Total average savings of \$827* when you combine home and auto.

CALL MY OFFICE FOR A QUOTE 24/7.
Being there is why I'm here.

Steve R McMahon, Agent
Bus: 908-464-7525
steve.mcmahon.wmwy@statefarm.com

State Farm®
AUTO, HOME, LIFE & BUSINESS INSURANCE
261 Springfield Avenue, Suite 205 • Berkeley Heights, NJ 07922

*Average annual household savings based on national 2016 survey of new policyholders who reported savings by switching to State Farm. State Farm Mutual Automobile Insurance Company, State Farm Indemnity Company, State Farm Fire and Casualty Company, State Farm General Insurance Company, Bloomington, IL. P007186.1

Q: Should learning be a chore?
A: No. We don't think so.

Features: > Self-Paced > No Exams > Flexible Hours
> Homework Optional > Ample Breaks & Recess

Ideal for: • Actors • Models • Artists • ESL
• Elite Athletes • Gifted & Talented • ADHD

American Boys Prep
Union County's Best Alternative to Homeschooling

908.516.4231 **Admissions@ABP-Academy.org**

DORMERS & ADDITIONS • DECKS & PORCHES • MASONRY STEPS & PATIOS



Kitchens



Baths



Basements



Attics



Decks



15% FALL SAVINGS

With this ad. Up to \$1,500 on any job. Not valid with other offers or on prior purchases. Not to be combined with any other offer. Expires 11-30-17.

Low Monthly Payment Plans

Porches/Steps \$105	Windows \$189	Basements \$295
Bathrooms \$199	Kitchens \$289	Decks/Patios \$139
Roofing \$179	Siding \$259	

0% for up to 18 Months

Estimated monthly payments. Rates & payments based on credit approval.

www.MagnoliaHomeRemodeling.com



Licensed & Insured • LO65735 • NJ DCA 13VH07755301



**Call Today
for a Free Estimate!
855-624-6655**

**Affordable,
Professional & Reliable**

- ✓ Family Owned & Operated
- ✓ 25+ Years Remodeling Experience
- ✓ Angie's List Service Award Winner
- ✓ BBB A+ Rated
- ✓ HomeAdvisor Screened & Approved
- ✓ GAF Certified Roofing Installer
- ✓ 100% Financing Available
- ✓ 0% Interest Programs
- ✓ Outstanding Workmanship
- ✓ CertainTeed Building Solutions Specialist

Family Owned & Operated



Siding



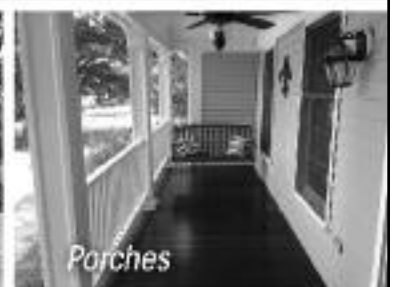
Roofing



Windows & Doors



Masonry



Porches

SIDING & ROOFING • WINDOWS & DOORS • KITCHENS & BATHS • BASEMENTS & ATTICS

WRITE THE NEXT GREAT AMERICAN NOVEL WITH HELP FROM THE LIBRARY

Most Thursdays between 10:30 a.m. - 12:30 p.m., you can find the members of The Watchung Writers Group gathering at SCLSNJ's Watchung Library branch. The Watchung Writers Group was started in 2001 by novelist Gordon McLenithan with the objective of creating a supportive network of aspiring authors. The group is open to writers at all levels of experience from beginners to published authors and attracts members from surrounding towns.

"I embrace the opportunity to spread the word that life-changing work is happening in our Watchung Writers Group. We're all serious about our writing. Being part of this group makes me a better writer," said member Vivian Fransen.

The group is always looking for additional adult members that are striving to improve their writing skills while also sharing literary and personal experiences during the two-hour working sessions.

Multiple SCLSNJ branches endeavor to assist local authors in penning their first (or second) novel. Learn more or register to attend the next session at: sclsnj.libnet.info



(above) Group members: Tom Melore of Branchburg, J.R. Bale of New Providence, Patricia Rydberg of Bridgewater, Bob Mayers of Watchung, David Kaplan of Gillette, Katie Taillon of Watchung, Liz Crystal of Greenbrook, and Vivian Fransen of Scotch Plains.

Enjoy Aging . . .

Luxury Senior Living, Family Style
"The Residences at Warren"



- Private suite with full bath
- Cooking and housekeeping included
- Hobby and craft space
- Onsite library
- Wi-Fi throughout
- On-Floor laundry
- Onsite parking
- Handicap accessible



PLEASE CALL (908) 526-8130
OR VISIT CHCHOUSING.ORG
FOR MORE INFO.



SHIP AT SAGE TO ANSWER MEDICARE OPEN ENROLLMENT QUESTIONS ON NOV 16

It's Medicare Open Enrollment time (October 15 through December 7) and SHIP (State Health Insurance Assistance Program) at SAGE will offer free assistance in reviewing your Medicare coverage for 2018.

A free program to discuss Medicare plans and options, and answer questions to prepare for open enrollment will be held at SAGE Eldercare, 290 Broad Street, Summit, on Thursday, November 16, 6 - 7 pm. The program will also be offered December 4, 1 - 2 pm.

SAGE Eldercare serves as the SHIP representative for Union County. Staff and volunteers are available for free, personalized, confidential, and objective Medicare counseling on decisions about coverage; help with claims, billing, or appeals; and provide information on programs for people with limited income and resources, as well as to help you reassess your coverage.

The counselors receive ongoing training from the Division on Aging Services, New Jersey Department of Human Services.

"It is recommended that you obtain advice and guidance from someone who is not affiliated with a particular health care insurance company

so that you can compare plans without any bias. Personalized Medicare counseling is available, free of charge, from SHIP counselors, such as those who volunteer their time at SAGE," said Elyse Drucker, Union County SHIP Coordinator.

For more information or to register for the Medicare Open Enrollment programs, please call: 908.598.5548 or email: education@sageeldercare.org.

To make an appointment with a SHIP counselor, please call: 908.273.6999 or email: ship@sageeldercare.org.

If you live outside Union County, visit www.medicare.gov/contacts or call 1-800-MEDICARE to get the phone numbers of SHIP representatives in other NJ counties or in other U.S. states.

SAGE is committed to being the leading provider of programs and services to meet the changing needs of older adults, their families, and caregivers in Union, Essex, Morris, and Somerset Counties.

For more information, please call 908.273.5550 or visit www.sageeldercare.org.

Medicare Counseling

SHIP of Union County State Health Insurance Assistance

We can help answer questions:

- What changes have been made to my existing coverage?
- How much insurance do I need? And more!

FREE CONFIDENTIAL OBJECTIVE

Open Enrollment: October 15 through December 7

908.273.6999 SHIP@sageeldercare.org

All Absolute CONSTRUCTION

***Father & Sons
Owned &
Operated***

★★★★★ **5-STAR GUARANTEED ROOF!**

EVERY ROOF INSPECTED BY YOUR CITY OR TOWN INSPECTOR BEFORE WE SHAKE HANDS!



1-800-766-2390

FREE ESTIMATES

FULLY INSURED • NJ LIC #13VH08869300 • MAJOR CREDIT CARDS

**Family
Owned &
Operated**

Senior & Military
Discounts
100% Satisfaction
Guaranteed
FIREPLACES

Zero Money Down At Signing For Qualified Customers



CHIMNEY

- Repairs • Rebuild
- Recline • Cleaning
- Cuppling



ROOFING

- New Roof • Re-Roof
- Flat Roof • Shingles
- All Repairs



GUTTERS

- Cleaning • Repair
- New Gutters
- Gutter Screening



MASONRY

- Steps • Sidewalks
- Driveways
- All Brick & Block Repairs

- Cleaning
- Repairs
- Dampers Installed
- SIDING**
- Installs & Repair
- California Stucco
- Brick Facing
- Cedar Shakes
- Vinyl
- Aluminum

**\$700 OFF
ANY NEW ROOF**

All Absolute CONSTRUCTION With this coupon. Cannot be combined with any other offer. Expires 12/15/17.

**FREE
GUTTER GUARDS**
With any new roof

All Absolute CONSTRUCTION With this coupon. Cannot be combined with any other offer. Expires 12/15/17.

**CHIMNEY
SWEEP**
Starting at
\$29.00

All Absolute CONSTRUCTION With this coupon. Cannot be combined with any other offer. Expires 12/15/17.

15% OFF
Any repair of
**SIDEWALKS &
STEPS**

All Absolute CONSTRUCTION With this coupon. Cannot be combined with any other offer. Expires 12/15/17.

**\$275 OFF
ANY NEW STEPS**

All Absolute CONSTRUCTION With this coupon. Cannot be combined with any other offer. Expires 12/15/17.

**FREE
GUTTER CLEANING**
With any repair
over \$400

All Absolute CONSTRUCTION With this coupon. Cannot be combined with any other offer. Expires 12/15/17.

**STAINLESS STEEL
CHIMNEY CAP**
Starting at
\$30.00

All Absolute CONSTRUCTION With this coupon. Cannot be combined with any other offer. Expires 12/15/17.

**GUTTER
CLEANING**
Starting at
\$39.00

All Absolute CONSTRUCTION With this coupon. Cannot be combined with any other offer. Expires 12/15/17.

**10% OFF
ANY ROOF REPAIR**

All Absolute CONSTRUCTION With this coupon. Cannot be combined with any other offer. Expires 12/15/17.

2017 LEAF COLLECTION

Residents will have three (3) options for leaf collection this fall:

1. Put leaves in cans, open containers, or paper bags and place at curbside for Monday collection. Leaves, grass, brush, and garden debris are collected every Monday through December 4. (Must be placed at curb prior to 5 AM)
2. Have your landscaper collect leaves. Landscapers are responsible for disposal of leaves and are not permitted to dump at DPW. If your landscaper plans to blow leaves into the curb they must follow the pickup schedule for your street and pay for a permit to have them vacuumed. View application.
3. You may purchase a permit for \$55 to have your leaves vacuumed from the curb.

1. (Fee is waived for seniors who receive a \$250 Senior Deduction, Disabled Person Deduction, or Widow of Senior/Disabled Person Deduction. Please note the Senior Deduction is not the same as the Property Tax Reimbursement or the Homestead Credit, and qualified individuals must meet income and age requirements set by State of NJ. To verify eligibility you may contact the Borough Clerk's Office 908-665-1400 x0.)

Leaf Collection Guidelines

Participating residents will have their leaves vacuumed at curbside in accordance with the schedule listed below.

Leaves must be placed in the roadway at curbside. Leaves cannot be put out until the

Thursday before your scheduled pickup. They must be put out by 5 AM Monday of your collection week as outlined below.

Sticks may not be commingled into the leaf piles – they clog the vacuum.

Only leaves from your property are permitted.

Residents will receive a permit that must be placed in their window and be visible from the street during their collection week.

Questions concerning the program should be directed to James Johnston, Public Works Manager at 908-665-1076.

Options for Purchasing Leaf Vacuuming Permit:

Deadline for Purchasing Permit: Monday, November 20

1. Pay Online and Print your Permit (Online payment option will begin on Wednesday, September 6 and end on Monday, November 20 – PLEASE CALL THE CLERK'S OFFICE IF YOU HAVE QUESTIONS 908-665-1400 x0). IMPORTANT! IF YOU PAY ONLINE YOU MUST PRINT THE PERMIT BEFORE YOU EXIT THE PROGRAM. YOU WILL NOT BE ABLE TO GO BACK AND PRINT IT.
2. Print Application– mail or bring with payment to the Municipal Center – Clerk's Office, 360 Elkwood Avenue, New Providence, NJ 07974.
3. Call the Borough Clerk's Office and pay with credit card over the phone 908-665-1400 x0 (permit will be mailed to you).

2017 LEAF COLLECTION SCHEDULE (WEATHER PERMITTING)

EAST	WEST
Summit Line to South Street	South Street to Berkeley Heights Line
WEEK OF:	WEEK OF:
November 13, 2017	November 6, 2017
December 4, 2017	November 27, 2017

COUNTY ROAD LEAF COLLECTION SCHEDULE – RESIDENTS WHO LIVE ON COUNTY MAINTAINED ROADS WILL BE VACUUMED BY THE UNION COUNTY PUBLIC WORKS DEPARTMENT. THESE ROADS WILL BE VACUUMED AS SCHEDULED BY UNION COUNTY: SPRINGFIELD AVENUE, MOUNTAIN AVENUE, SOUTH STREET, PASSAIC STREET.

Lic. #13VH05110300  Over 35 Years of Experience

JOHN DeNICOLA JR.
CERAMIC TILE AND MARBLE CONTRACTOR; LLC
Specializing in bathroom remodeling
No job too small
5 YEAR WARRANTY ON LABOR • FULLY INSURED

www.johndenicolajrtiler.com • bigtileman@gmail.com
908-232-7383 • Cell: 908-868-2001
24 Northfield Road • Millington, NJ 07946

NJ ELECTRICIAN #16239


KOPE ELECTRIC

COMMERCIAL & RESIDENTIAL SERVICE UPGRADES
GENERATORS, SURGE PROTECTION, LIGHTING
www.KOPEELECTRIC.COM
908-722-KOPE

EXPERIENCED HELP WANTED
Fully Insured Free Estimates

Needleman Roofing Lic. # 13VH06601300

SLATE - TILE - ASPHALT SHINGLES
908-389-0200

GELORMINI'S AUTOMOTIVE SERVICE

Mike Gelormini, Owner **(908) 464-6500**
ALL TYPES OF FOREIGN & DOMESTIC REPAIRS
NJ licensed inspection facility.
www.gelorminiauto.com
1275 Springfield Avenue
New Providence, NJ

BUYING OR SELLING?
Don't let this active fall market pass you by!
Let a seasoned Real Estate professional lead you in your search for that perfect house or buyer for your home.



EILEEN SERGENT
DIRECT (CELL) 908 230-4800
NJAR Distinguished Sales Club
NJAR Circle of Excellence '92-2016
LET MY EXPERTISE BE THE KEY TO YOUR REAL ESTATE SUCCESS!
401 Springfield Ave, Summit, NJ
OFFICE: 908-522-1800



AAA ALLCAR
AUTO SALVAGE

WANTED:
ALL CARS & TRUCKS: JUNK OR NOT

Late Model Foreign & American New & Used
Auto & Truck Parts:
• Motors • Transmission
• Auto Glass • Computers
• Tail Lights • Doors
• Fenders • AC Compressors

Junk Tow Away
Fast Pick Up
24 HR Service

732-381-2646
Night Towing 732-496-1633
1 Dudley Ct. & Rt. 1 South, Avenel, NJ
Across from Sansone Auto Mall.
10% OFF ALL AC COMPRESSORS
With this ad. Expires 12/10/17.

Why Repave?
Sealcoat & Save!
MAKE YOUR ASPHALT GREAT AGAIN!

BACK TO BLACK SEALCOATING
732-968-3646
backtoblacksealcoating.com
backtoblacksealcoating@yahoo.com

WE WILL EDGE, CLEAN, PRIME OIL SPOTS & SEALCOAT YOUR DRIVEWAY!

- Parking Lot Line Striping
- Driveways & Parking Lots
- Specializing in Large Parking Lots
- Hot Rubberized Crack Filling
- Hot Asphalt Repairs • Tennis Courts
- Asphalt or Coal Tar (Emulsion Sealer)
- Pothole Patching • SNOW REMOVAL
- Power Washing • Asphalt Patch Work

Call for a **FREE Estimate & Receive a FREE Gift!** **5% DISCOUNT FOR SENIORS & VETERANS!** We will beat any legitimate Sealcoat company's written estimate. **FULLY INSURED!** Lic# 13VH06534400

\$50 OFF DRIVEWAY REPAIR or SEALCOATING
Minimum purchase \$500. Limit one. No other discounts apply. Exp. 11/30/17.



Make BAGEL CAFE your
afternoon snack spot!

**ACAI & PITAYA
BOWLS \$8.95** *tax incl.
[\$7 FROM 3-5PM]

TO ORDER 1-choose base: ACAI or PITAYA 2-choose AGAVE or HONEY 3-choose BOWL type below

*ingredients cannot be substituted

- SIMPLE** ~ banana, blueberry, coconut flakes, strawberry + nola
- BERRY GOOD** ~ strawberry, blueberry, blackberry + nola
- STAYCATION** ~ banana, mango, blueberry + nola
- EAZY BREEZY** ~ strawberry, pineapple, kiwi + nola
- A LITTLE NUTTY** ~ banana, kiwi, peanut butter swirl, strawberry + nola
- PURPLE HAZE** ~ banana, strawberry, Nutella® + nola

- ADD-ONS**
- coconut flakes **.75¢**
 - all natural peanut butter **\$1**
 - all-natural almond butter **\$1.50**
 - chia or flax seed **\$1.50**
 - hemp hearts **\$2**
 - Nutella® **\$2**

NOLA = blend of oats, dates, cacao powder, coconut flakes, chia and flax seed, cinnamon

save
time...
order on
our app

\$3 SMOOTHIES

[FOR LIMITED TIME; REGULARLY \$7]



- BAGEL CAFE -



Don't let the name fool you— we're more than just bagels.

908.263.7180 | bagelcafenj.com

BAGELS | CRAFT COFFEE | SALADS | PALEO + POWER PLATES | SANDWICHES

DR. KEITH MASON PUBLISHES INTO THE WOODS ARTICLE



New Providence educator and resident Dr. Keith Mason has published an article in the October 2017 issue of Choral Director Magazine. The cover article entitled "Musicals – The Multiple Intelligences Way" describes how educators can align musicals and the Multiple Intelligences framework in instruction. Dr. Mason provides examples from the musical Into the Woods, which is celebrating the 30th anniversary of its Broadway debut on November 5. He focuses on ways to utilize various curriculum frameworks to integrate the arts, and especially musicals, into student learning.

Photo courtesy Timeless Communications

JC PAINTING SERVICE

INTERIOR/EXTERIOR
RESIDENTIAL & COMMERCIAL



John R. Capra

732-469-1069

Cell: 908-295-8211

Email: jjrc229@aol.com jcpaintingservices.com

Lic #: 13VH01052800

HOME MOVIES TRANSFERRED to digital files & DVD

- Video Tape Transfers
- DVD & Flash Drive Duplication
- Audio Cassette to CD
- Reel to Reel Audio to CD
- LP to CD
- High Speed Slide Scanning
- Foreign Conversions

Video Production & Editing
Training • Sales • Documentary

VIDEO DATA SERVICES®

locally owned since 1984

www.vdsnj.com

facebook.com/vdsnj

email: ira@vdsnj.com

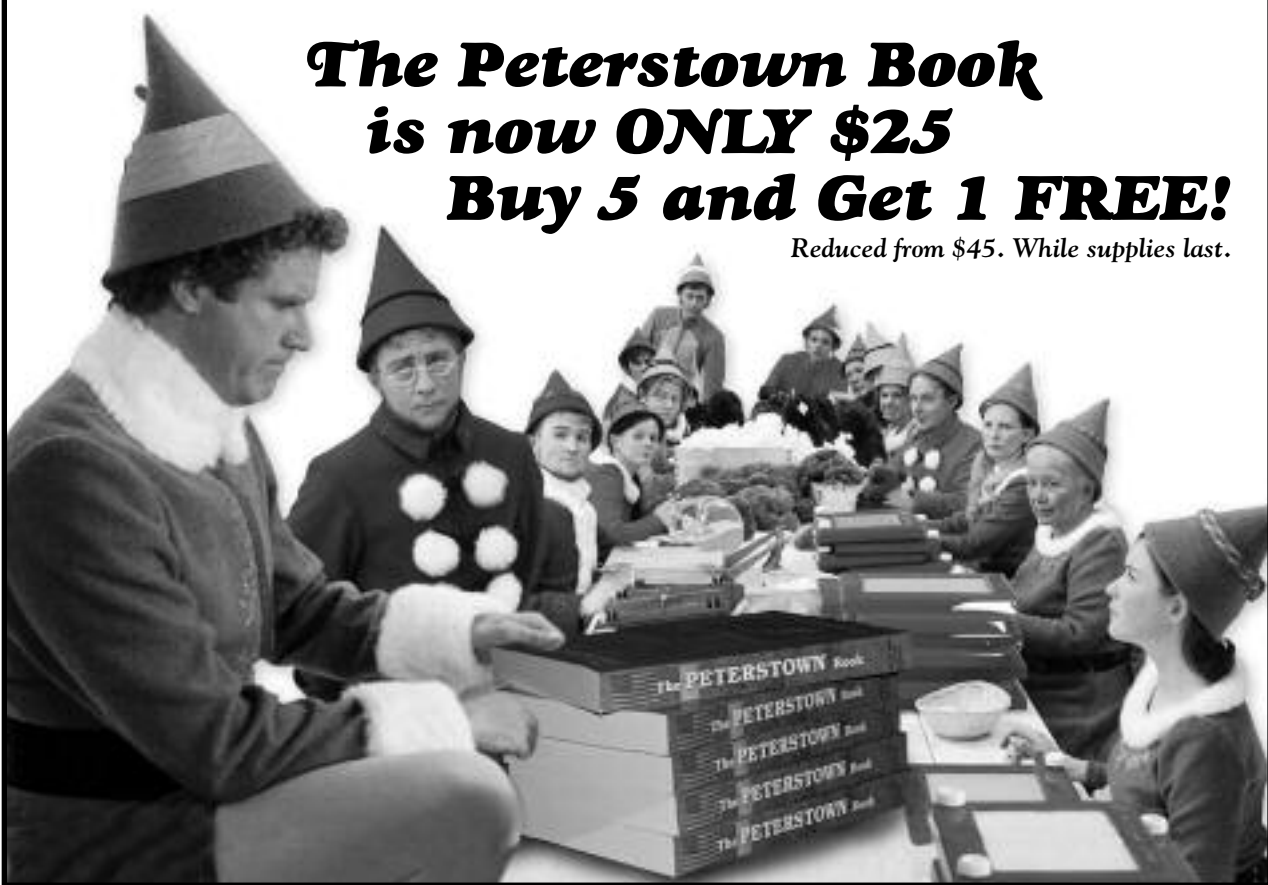
908-964-4004

406 Chestnut St. • Union, NJ 07083

CHRISTMAS GIFT GIVING MADE EASY!

The Peterstown Book
is now ONLY \$25
Buy 5 and Get 1 FREE!

Reduced from \$45. While supplies last.



The PETERSTOWN Book

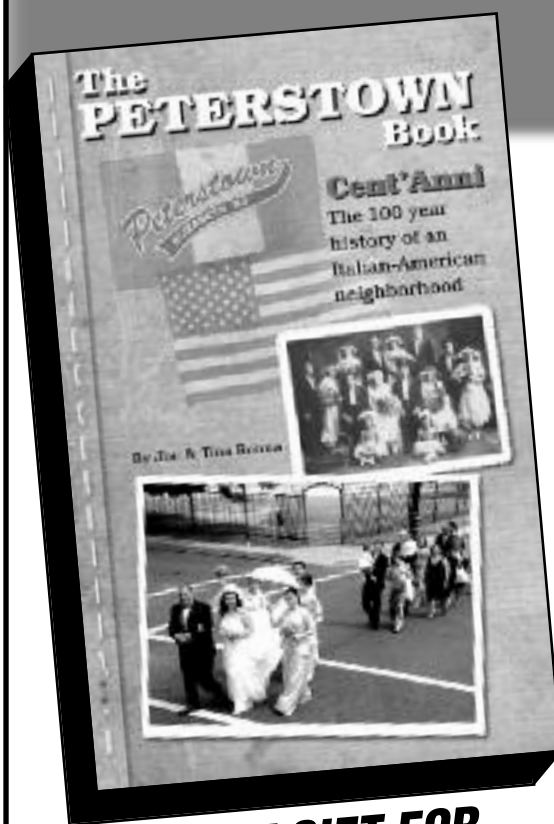
By Joe &
Tina Renna

Cent'Anni

The 100 year history
of an Italian-American
neighborhood

- **776 Oversized Pages**
- **Thousands of Photos**
- **Hundreds of Recipes**

The Peterstown Book is the 100 year history of an Italian-American neighborhood told through stories about the people and families who lived there. The book records the oral history in danger of being lost and illustrates the traditions and customs of the community through thousands of photos, hundreds of recipes, and antidotes shared by residents past and present.



**GREAT GIFT FOR
CHRISTMAS GIVING**

ORDER NOW!

- On line at PeterstownNJ.com
- By phone 908-418-5586
- Mail Check and form to:
Renna Media
202 Walnut Ave.,
Cranford, NJ 07016
- Email inquiries to:
info@rennamedia.com



\$25 +\$1.75 Sales Tax

BUY 5 BOOKS & GET 1 FREE: \$125 +tax

FREE Shipping

Number of Books: _____

Amount of check _____

Name _____

Address _____

Phone _____

Email: _____

EAT *Drink* AND BE Merry
We'll take care of the rest!

RESERVE YOUR
Holiday Party

Large Groups Welcome
Private Rooms Available

Holiday Party Packages start as low as \$15.99 pp.
Soda, coffee & tea included! (groups of 15 or more)

Chimney Rock Inn®

Gillette Location
908-580-1100

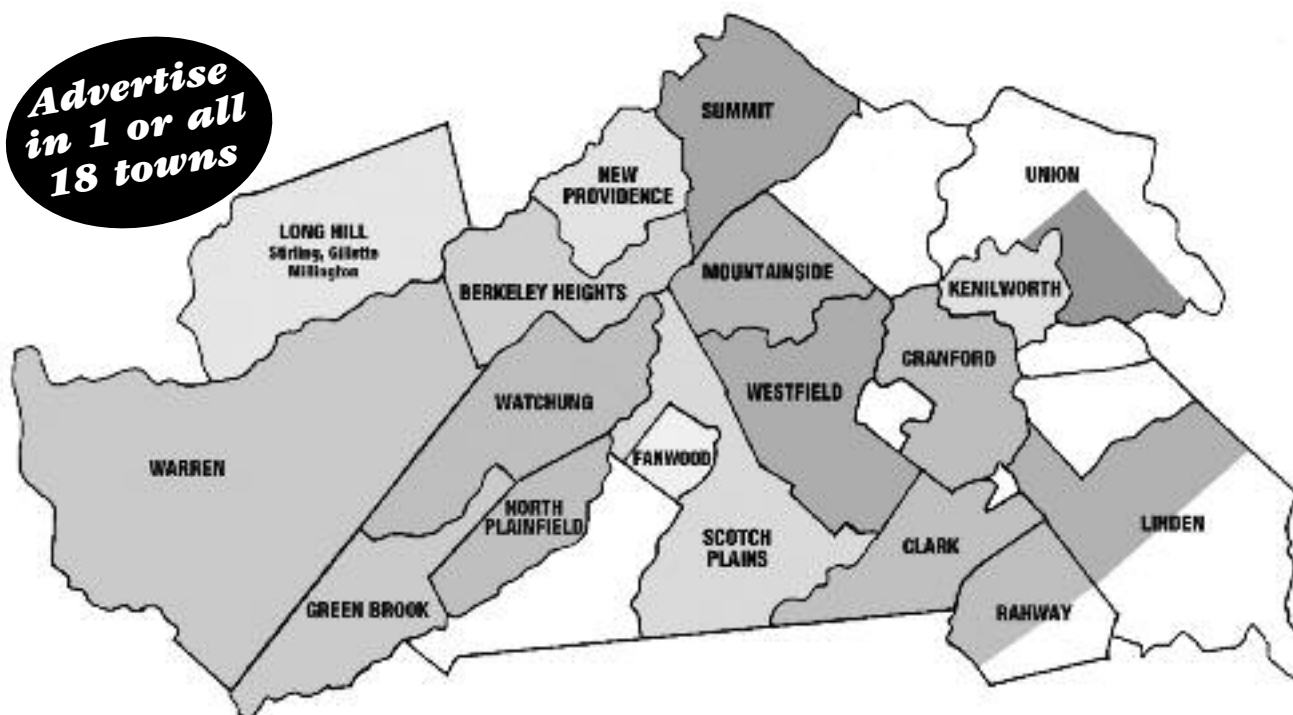


342 Valley Road
Gillette, NJ 07933

RENNA MEDIA
NEWSPAPER RATE SHEET
WE MAIL
100,000
NEWSPAPERS
MONTHLY!

To place an ad call:
Tina Renna at 908-418-5586
or Joe Renna at 908-447-1295
 email: info@RennaMedia.com
 Fax: 908-709-9209

Advertise
in 1 or all
18 towns



Qty: 4,800
 Mailed to every home
 and business.
Zip: 07922



Qty: 6,600
 Mailed to every home
 and business.
Zip: 07066



Qty: 9,800
 Mailed to every home
 and business.
Zip: 07016



Qty: 3,000
 Mailed to every home
 and business.
Zip: 07023



Qty: 3,000
 Mailed to every home
 and business.
Zip: 08812



Qty: 3,600
 Mailed to every
 home and business.
Zip: 07033



Qty: 10,000
 9,400 mailed to homes
 and businesses.
Zip: 07036



Qty: 3,600
 Mailed to every home
 and business in Gillette,
 Millington and Stirling.
**Zips: 07933,
 07946, 07980**



Qty: 2,800
 Mailed to every home
 and business.
Zip: 07092



Qty: 4,700
 Mailed to every home
 and business.
Zip: 07974



Qty: 8,300
 Mailed to every home
 and business.
**Zips: 07060
 07062, 07063**



Qty: 6,400
 5,600 mailed to homes
 and businesses.
Zip: 07065



Qty: 9,700
 Mailed to every home
 and business.
Zip: 07076



Qty: 9,700
 Mailed to every home
 and business.
Zip: 07901



Qty: 5,500
 5,000 mailed to
 homes and businesses.
Zip: 07083



Qty: 6,200
 Mailed to every home
 and business.
Zip: 07059



Qty: 3,000
 Mailed to every home
 and business.
Zip: 07069



Qty: 11,800
 Mailed to every home
 and business.
Zip: 07090

Past issues can be found at RennaMedia.com

Artwork included in ad price.

Newspapers are Black on White

Units Size

		RATE FOR ANY 1 NEWSPAPER	RATE FOR ANY 3 NEWSPAPERS	RATE FOR ANY 6 NEWSPAPERS	RATE FOR ANY 9 NEWSPAPERS	RATE FOR ANY 12 NEWSPAPERS	RATE FOR ANY 15 NEWSPAPERS	RATE FOR ALL 18 NEWSPAPERS
1 Unit - Business card	3.25" x 2"	\$60	\$150	\$250	\$340	\$400	\$450	\$500
2 Units	3.25" x 4"	\$100	\$250	\$400	\$500	\$600	\$700	\$800
4 Units	6.5" x 4"	\$180	\$450	\$700	\$950	\$1100	\$1300	\$1500
6 Units	10" x 4"	\$240	\$600	\$900	\$1250	\$1400	\$1650	\$1900
9 HALF PAGE	10" x 6"	\$320	\$800	\$1000	\$1350	\$1500	\$1800	\$2100
12 Units	10" x 8"	\$360	\$900	\$1200	\$1550	\$1800	\$2150	\$2500
18 FULL PAGE	10" x 14"	\$400	\$1000	\$1400	\$1750	\$2000	\$2400	\$2800

FRONT PAGE BANNER 8.25" x 2" **\$320**
FRONT PAGE BOX 1.5" x 4.5" **\$240**
BACK COVER 10" x 14" **\$600**

Back cover, front page banner and front box reserved on first come,
 first served basis. Current advertiser has right of first refusal.

PAY FOR 6 MONTHS AND GET 1 FREE

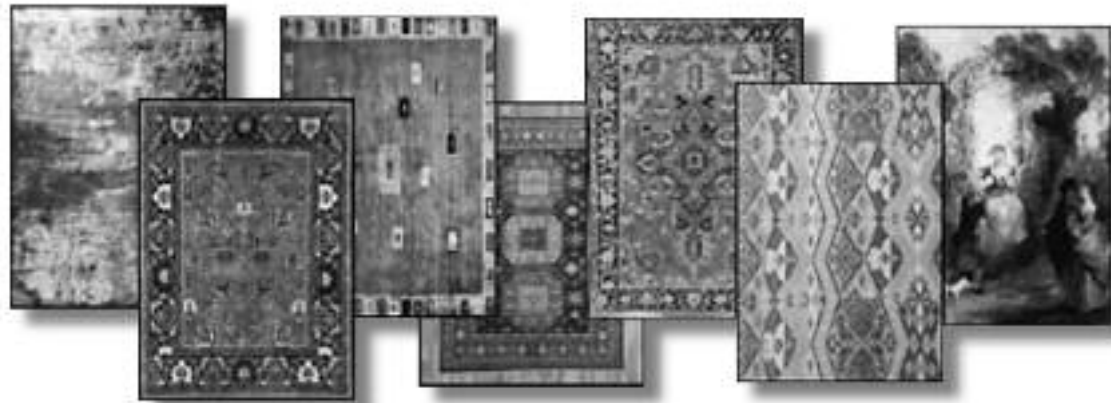
Make Checks payable to Renna Media, 202 Walnut Avenue, Cranford, NJ 07016

Grand Opening Celebration!



RUGS OF ORIENT

YOUR RESOURCE OF GENUINE HAND WOVEN RUGS



**RUGS OF ORIENT HAS A LARGE SELECTION
OF NEW AND ANTIQUE HANDWOVEN RUGS
FROM AROUND THE WORLD IN OUR NEW SHOWROOM
CONVENIENTLY LOCATED IN DOWNTOWN SUMMIT, NJ.**

**OUR SHOWROOM FEATURES HUNDREDS OF RUGS IN
TRADITIONAL, TRANSITIONAL AND MODERN DESIGNS
IN A VARIETY OF COLORS AND SIZES.**

**WE SPECIALIZE IN SELLING, BUYING, REPAIRING
AND HAND WASHING ORIENTAL RUGS.**

**OUR SERVICE ALSO INCLUDES CUSTOM RUGS MADE TO ORDER
IN ANY SIZE AND SHAPE.**



908-277-2227

Rugs_Of_Orient@yahoo.com

362 Springfield Avenue • Summit, NJ 07901

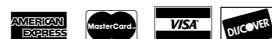


WWW.BERKELEYWINE.COM

908-464-3610

500 Springfield Ave, Berkeley Heights, NJ 07922

Mon - Thu: 9am - 9pm • Fri & Sat: 9am - 10pm • Sun: 11am - 7pm



Fine Wine | Craft Beer | Liquor | Cigars



10% OFF

BUY 4 OR MORE WINE BOTTLES

20% OFF

BUY 12 OR MORE WINE BOTTLES

10% OFF

BUY 5 OR MORE CIGARS

*Holiday
Season
Specials*



Gift Baskets

\$50 | \$75 | \$100 | Custom

**SPECIAL DISCOUNT FOR
CORPORATE ORDERS**

Bertani Amarone 2007\$66.99

Sale on 1.5 Liters Wine Price

Cavit 1.5 L	\$13.09
Liberty Creek 1.5 L	\$ 7.29
Sutter Home 1.5 L	\$ 8.99
Woodbridge 1.5 L	\$11.09
Barefoot 1.5 L	\$10.99
clos du bois chard 1.5	\$16.99

Sale on Processo & Champagne Price

Riondo Processo	\$ 8.99
Lamarca Prosecco	\$13.99
Mionetto Processo	\$12.09
Cupcake Processo	\$ 9.99
Veuve Cliquot	\$46.09
Moet Brut	\$39.09
Moet Dom Perignon 750ml	\$150.99
Ruffino Prosecco 750	\$11.09
Perrier-Jouet Champagne Grand Brut	\$38.99

Whiskey Scotch Price

Macallan 12 Years, 750 ml	\$52.99
Johnnie Walker Black Label L	\$59.09
Johnnie Walker Red Label, 1.75 L	\$32.09
Jack Daniel Black No.7, 1.75 L	\$44.09
Jim beam White Label, 1.75 L	\$32.09
Dewars White Label, 1.75 L	\$32.09
Johnnie Walker Blue Label 750 ml	\$179.99
Bulleit Bourbon, 1.75 L	\$49.99
Woodford Reserve Bourbon 1 Liter	\$45.99
Johnnie Walker Black 1 Liter	\$36.99

Sale on 750 ml Wine Price

Kendal Jackson Vintage R. Chardonnay ...	\$12.09
Simi Sauvignon Blanc	\$11.99
Apotic Red	\$ 9.99
Santa Margarita Pinot Grigio	\$20.09
Colombian Creast Cabernet Sauvignon	\$10.99
J. Lohr Cabernet Sauvignon	\$12.99
Hess Select Cabernet Sauvignon	\$15.99
La Creama Pinot Noir	\$15.99
Meiomi Pinot Noir	\$19.09
Coppola Pinot Noir Diamond	\$14.99
Simi Cabernet Sauvignon	\$16.99
Mark West Pinot Noir	\$ 9.99
Walnut Block Sauv Blanc 750	\$11.99
Relax Riesling 750	\$ 9.99
Ferrandier Chard 750	\$12.99
J. Lohr Chard 750	\$10.99
Josh Chard 750	\$11.09
Cambria Pinot Noir Benchbreak 2014	\$16.33
Josh Cab Sauv 750	\$13.09
Kim Crawford Sauv Blanc 750	\$13.99
Kenwood Vineyard Merlot, Jack London	\$15.99

Vodka, Gin & Rum Price

Tanqueray Gin, 1.75 L	\$34.09
Bombay Sapphire Gin, 1.75 L	\$36.09
Bacardi Rum, 1.75 L	\$19.99
Captain Morgan Spice Rum, 1.75 L	\$25.09
Tito's Vodka, 1.75 L	\$29.09
Absolute Vodka, 1.75 L	\$29.09
Ketel One, 1.75 L	\$39.09
Grey Goose, 1.75 L	\$49.09
Smirnoff, 1.75 L	\$19.09